

The Centre for Civil Society and Governance at The University of Hong Kong (HKU-CCSG) strives to promote sustainable development through collaborative action. Building upon the success of the HSBC Rural Sustainability Programme which revitalised rural villages in Hong Kong through urban-rural collaboration, HKU-CCSG launched the APAC Initiative for Regional Impact (AIRI) in October 2021 to foster rural sustainability in the Asia-Pacific region with the support from The Hongkong Bank Foundation.

AIRI has established a regional consortium with HKU-CCSG and the School of Public Policy and Management at Tsinghua University, the University Outreach Office at Chengchi University, and the Department of Development and Sustainability of the Asian Institute of Technology as the founding members and further engaged international and local partners. The programme has not only conducted collaborative research and regional knowledge exchange events, but also organised a fellowship scheme which cultivated and incubated an Asia-Pacific talent pool for activating changes for rural sustainability.

This book documents AIRI's three-year journey, summarising its approaches, actions, and impacts. We hope it will inspire more multi-sectoral and cross-border collaborations for a sustainable future of the world.

AIRI website:



Rural Sustainability Programme
APAC Initiative for Regional Impact
永續鄉郊-亞太區域合作計劃
香港大學 THE UNIVERSITY OF HONG KONG



Published by
公民社會與治理研究中心
CENTRE FOR CIVIL SOCIETY AND GOVERNANCE
香港大學 THE UNIVERSITY OF HONG KONG

Supported by



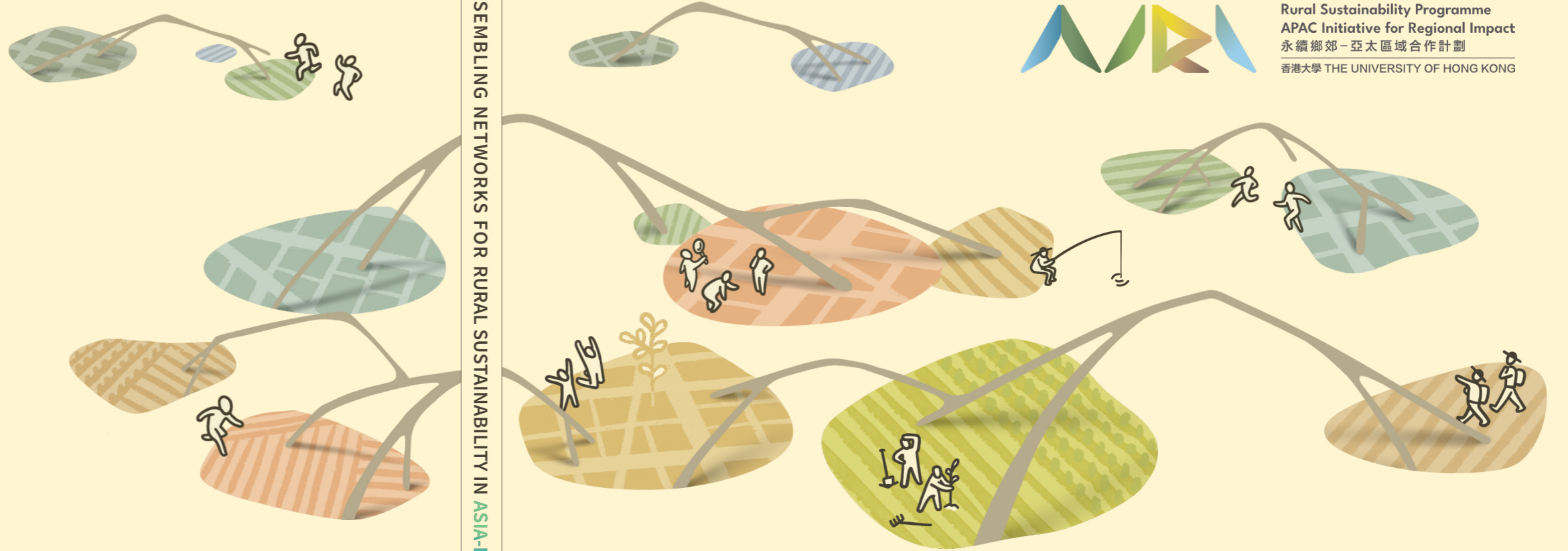
滙豐銀行慈善基金
The Hongkong Bank Foundation

ISBN 978-9688-76865-9-0



9 789887 686590

ASSEMBLING NETWORKS FOR RURAL SUSTAINABILITY IN ASIA-PACIFIC REGION



Rural Sustainability Programme
APAC Initiative for Regional Impact
永續鄉郊-亞太區域合作計劃
香港大學 THE UNIVERSITY OF HONG KONG

ASSEMBLING NETWORKS FOR RURAL SUSTAINABILITY IN ASIA-PACIFIC REGION

Compiled by Centre for Civil Society and Governance, The University of Hong Kong

This publication is compiled by the Centre for Civil Society and Governance at The University of Hong Kong and supported by The Hongkong Bank Foundation.



公民社會與治理研究中心
CENTRE FOR CIVIL SOCIETY AND GOVERNANCE
香港大學 THE UNIVERSITY OF HONG KONG

Established in December 2002, the Centre for Civil Society and Governance of The University of Hong Kong is the first research centre in Hong Kong dedicated to enhancing our knowledge of civil society—its nature, constituents, dynamics and roles (in particular its contribution toward governance). The Centre aims to contribute to the attainment of a sustainable society through forging community-based, innovative solutions to inform policy deliberation and collective action.



滙豐銀行慈善基金
The Hongkong Bank Foundation

HSBC created The Hongkong Bank Foundation in 1981 to bring together our community initiatives under one umbrella. Since then, we have been giving back to Hong Kong by focusing on care for the elderly, nurturing tomorrow's leaders and cultivating a sustainable future. One community, going forward together.

TABLE OF CONTENTS

PREFACE	3
1. INTRODUCTION	4
1.1 Background	5
1.2 Theory of Change	6
2. NETWORK OF NETWORKS	8
2.1 Network Founders	9
2.2 Programme Leaders	10
2.3 Network Partners	12
2.4 Network's Cornerstone Knowledge in Rural Revitalisation	14
3. THE FELLOWSHIP JOURNEY	16
3.1 Journey Steps	17
3.2 Knowledge and Perspective Development	20
3.3 Problem-solving Mindset and Skillset Training	28
3.4 Action Proposal Incubation and Competition	34
3.5 Showcasing and Sharing	40
4. IMPACT STORIES	42
4.1 Discover Rural Living Culture - Exploration of Rural Sustainable Development in Hong Kong	43
4.2 Nanjian Tiaocha (南澗跳茶): A Convergence of Minority Culture and the Tea Industry	44
4.3 Seaside Village Revitalization Information Service Center: A case design for the travel route in Turtle Island Village Community	45
4.4 Saving Roots & Routes: The Hua Ta Khe Community Regeneration Project	46
APPENDICES	
I List of Fellows	47
II List of Associate Fellows	48
III Innovative Solutions for Rural Revitalisation	49
IV Best Practice Cases	50
ACKNOWLEDGEMENT	52

PREFACE

Under the interwoven impact of urbanisation, globalisation and climate change, rural and peri-urban decay is a lasting, yet imminent, challenge shared by many cities in the Asia-Pacific region. Different countries and cities are at different stages of the rural revitalisation journey, and the various strategies and measures being put forward for urban-rural integration and rural sustainability offer valuable insights to one another. Beyond academic debate, there has been little exchange done, especially at the action level, in the past. It is crucial to aggregate wisdom and resources in the region to enhance rural resilience and promote sustainability at the global scale.

In the last three years, the Centre for Civil Society and Governance at The University of Hong Kong, the School of Public Policy and Management at Tsinghua University, the University Outreach Office at Chengchi University, and the Department of Development and Sustainability of the Asian Institute of Technology jointly founded a regional consortium to promote rural sustainability in the Asia-Pacific region. With each founding member sharing their respective experience in rural revitalisation and bringing their network of local and international organisations together, our APAC Initiative for Regional Impact (AIRI) has established a strong regional hub for rural sustainability knowledge co-creation and actions.

We conducted regional roundtable and forums to discuss critical rural issues and solutions. Through collaborative research, we developed a framework for comparing the rural revitalisation collaboration in the Asia-Pacific region. The one-year urban-rural sustainability fellowship scheme co-developed by the four universities, which included training, an experiential Hackathon, case study analysis, action proposal incubation, and a competition, successfully cultivated an Asia-Pacific talent pool for driving and delivering rural sustainability actions. The competition winners have already implemented action projects in Hong Kong, Mainland China, Taiwan and Thailand, bringing about real impacts.

By sharing the journey of AIRI through this book, we hope we can inspire more multi-sectoral and cross-border collaborations for a sustainable future of the world.

Professor Wai-Fung LAM
Convenor, Rural Sustainability Programme: APAC Initiative for Regional Impact
Director, Centre for Civil Society and Governance
The University of Hong Kong

1 INTRODUCTION

1.1 BACKGROUND

1.2 THEORY OF CHANGE

1.1 BACKGROUND

Rural areas are home to about 43% of the global population and house most of the world's natural capitals required to address pressing global challenges including climate change and food security. These areas are often venues with rooted cultural and spiritual meanings that maintain people's sense of belonging, mental wellness and overall well-being. Yet, these areas are facing serious sustainability challenges such as rural depopulation, labour shortage, environmental degradation, and lack of happenings.

Recognising the urgent, yet long been neglected, agenda for sustainable revitalisation in peri-urban and rural areas, the Centre for Civil Society and Governance at The University of Hong Kong (HKU-CCSG) initiated the HSBC Rural Sustainability Programme in 2013 and successfully revitalised the formerly deserted Lai Chi Wo village and its vicinity. To scale up the knowledge and incubation experience gained from the Lai Chi Wo project, HKU-CCSG launched the APAC Initiative for Regional Impact (AIRI) in October 2021.

AIRI aimed to establish a regional network of universities and organisations while building the capacity among stakeholders and change fellows. The three-year programme, supported by The Hongkong Bank Foundation, created action momentum for long-lasting rural sustainability in Asia-Pacific and contributed especially to the United Nations Sustainable Development Goal 17 on revitalising global partnership for sustainable development.

Our Missions:



CREATE

Strong Regional Network for the Attainment of Rural Sustainability



PROMOTE

Nature-based Solutions



STRENGTHEN

Rural-urban Linkage

1.2 THEORY OF CHANGE

Problem

Peri-urban and rural areas are facing serious sustainability challenges such as rural depopulation, labour shortage, environmental degradation, and lack of happenings

Activities

Established an Asia-Pacific consortium consisting of 4 university intermediaries, 4 international partners, and 40 local partners

Organised an Urban-Rural Sustainability Fellowship Scheme with 8 local taster training events, 4 co-training modules, a 1-week Design Thinking Hackathon, and an action proposal award competition with US\$100,000 seed grant

Conducted collaborative research and knowledge exchange events including 2 regional forums, 1 regional roundtable, and 1 regional symposium

Fellow feedback

“I feel that it (the Fellowship) has enhanced a lot of my knowledge and my skill. I feel like I am empowered.”



Outputs

Training materials and toolkits co-developed by 20 experts

4 reports on rural sustainability practices in Asia-Pacific reviewing over 70 policies, measures and institutions

33 Fellows and 31 Associate Fellows from 11 nationalities completed Fellowship

An online case bank with 53 best practice cases from 10 jurisdictions in Asia

An online innovative solutions bank with 27 rural revitalisation proposals

4 winning action projects implemented in 4 Asia-Pacific jurisdictions

A framework for comparing rural revitalisation collaboration across the Asia-Pacific region

Total programme reach of over 162,310 individuals

Outcomes

Stronger regional and local networks for attaining rural sustainability

Improved environmental integrity, social cohesion, rural livelihoods, economic diversity, cultural awareness, and community networks in the rural project sites of competition winners

Post-Fellowship survey showed increased scores of participants in the following:

- feeling that **they understand rural issues and challenges**
- having **established personal networks** for collaborative rural actions
- having **thought about their personal impacts** on the environment and rural areas
- having **contributed money or time** to environmental or wildlife conservation groups

Impact

Cultivated and incubated **a talent pool** in Asia-Pacific for activating changes and transitions for rural sustainability

Created action momentum for **long-lasting rural sustainability** in Asia-Pacific

Informed **a practical model** for Asia-Pacific rural development

Fellow feedback

“The fellowship throughout the course is well-structured. By joining this fellowship, I knew more about the tools and the relation between the rural and urban.”



2 NETWORK OF NETWORKS

- 2.1 NETWORK FOUNDERS
- 2.2 PROGRAMME LEADERS
- 2.3 NETWORK PARTNERS
- 2.4 NETWORK'S CORNERSTONE KNOWLEDGE IN RURAL REVITALISATION

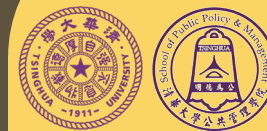
2.1 NETWORK FOUNDERS

Led by HKU-CCSG, three other prestigious universities in the region were engaged as the founding members of the regional consortium. While the respective cities face some similar rural challenges, their geographical proximity and different strengths in rural revitalisation allowed for collaboration that fostered diversity and mutual learning.



Centre for Civil Society and Governance
The University of Hong Kong

- Focuses**
- Collaborative governance
 - Local social-economic models



School of Public Policy and Management
Tsinghua University

- Focuses**
- Policy and regulatory frameworks
 - Rural leader and talent cultivation



University Outreach Office
Chengchi University

- Focuses**
- Digital advancements
 - Community-based social innovation



Department of Development and Sustainability
Asian Institute of Technology

- Focuses**
- Climate resilience
 - Regional collaboration

2.2 PROGRAMME LEADERS

Leaders of the programme were distinguished experts in the fields of public policy and governance, environmental management, and community development from the four founding member universities. Their collective expertise and leadership have steered the success of AIRI.

Professor Wai-Fung LAM

Director of Centre for Civil Society and Governance
The University of Hong Kong

Expertise:

Common-pool resource management, institutional policy analysis, public policy process, public governance, civil society



Associate Professor Thi Phuoc Lai NGUYEN

Program Chair of Development Planning Management and Innovation
Department of Development and Sustainability
Asian Institute of Technology

Expertise:

Coupled human-environment systems, social and environmental changes, governance of socio-ecological systems, education and innovation for sustainable development



Professor Yahua WANG

Executive President of China Institute for Rural Studies
Professor of School of Public Policy and Management
Tsinghua University

Expertise:

Public governance and policy, rural studies, environmental and natural resources management, contemporary China studies

Professor Mokbul Morshed AHMAD

Head of Department of Development and Sustainability
Asian Institute of Technology

Expertise:

International development, regional and rural development planning, NGOs/civil society, community development, human conflicts, adaptation to climate change



Professor Ching-Ping TANG

Director of University Outreach Office
Distinguished Professor of Political Science
Chengchi University

Expertise:

Public administration and policy, administrative democratisation, environmental policy and management, social entrepreneurship, community development, alternative development



Dr. Winnie LAW

Deputy Director and Principal Lecturer
Centre for Civil Society and Governance
The University of Hong Kong

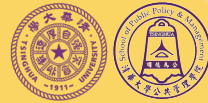
Expertise:

Sustainable development, community planning and engagement, environmental management, rural revitalisation, social innovation, corporate sustainability

2.3 NETWORK PARTNERS

Each founding member, with its own diverse and influential networks, played the role of an intermediary and further engaged a total of four international partners and 40 respective local partners. This “network of networks” design enabled us to reach out to key stakeholders and collaborators in the Asia-Pacific region to gather energy and momentum for knowledge generation, dissemination, and application.

School of Public Policy and Management, Tsinghua University



LOCAL PARTNERS

- China Institute for Rural Studies (CIRS), Tsinghua University
- Institute for Contemporary China Studies, Tsinghua University
- Shanghai Ethno Philanthropy Fund
- 跳茶電子商務 (杭州) 有限公司

INTERNATIONAL PARTNER

International Poverty Reduction Center in China (IPRCC)

Department of Development and Sustainability, Asian Institute of Technology



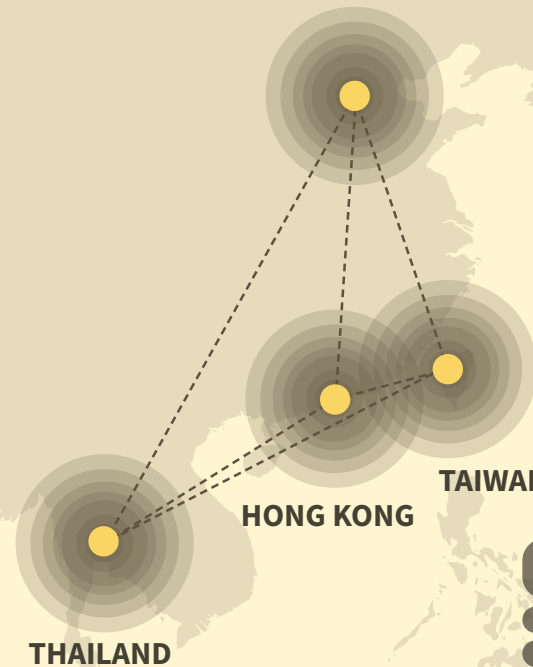
LOCAL PARTNERS

- Community Sufficiency Agriculture Learning Centre “Suan Lom Sirin”
- Department of Public Works and Town & Country Planning, Ministry of Interior
- Faculty of Architecture and Design, Rajamangala University of Technology Rattanakosin Khao
- School of Architecture, Art, and Design, King Mongkut’s Institute of Technology Ladkrabang
- Suksa Pattana School
- Thai Berg social enterprise
- Women Union, Khao Din Phattana
- Lopburi Monkey Foundation

INTERNATIONAL PARTNER

Stockholm Environmental Institute (SEI)

MAINLAND CHINA



HONG KONG

TAIWAN

THAILAND

University Outreach Office, Chengchi University



LOCAL PARTNERS

- Jialifruits or Beautifruits Co., Ltd. (佳麗果物)
- Made in Ulay (烏來編織協會)
- Tallmanrice (高個子禾穀)
- Vanilla Ueno Park (香草野園)
- Wulai Qudelanan Elementary School
- Yuan Tsui Culture Co., Ltd.
- 大桶山泰雅藝術館
- DB Brewery (鄧爸麥酒)
- Guppy Inclusive Ltd.

INTERNATIONAL PARTNER

Taiwan Fund for Children and Families (TFCF)

Centre for Civil Society and Governance, The University of Hong Kong



LOCAL PARTNERS

- Hong Kong Urban-rural Sustainable Development Association Ltd.
- The Hong Kong Institute of Architects
- The Hong Kong Institute of Landscape Architects
- The Hong Kong Institute of Planners
- Hong Kong Institute of Urban Design
- Hong Kong Marine Ecological Association
- Kadoorie Farm and Botanic Garden
- Future Green
- Walk in Hong Kong
- Village Vibe Limited

INTERNATIONAL PARTNER

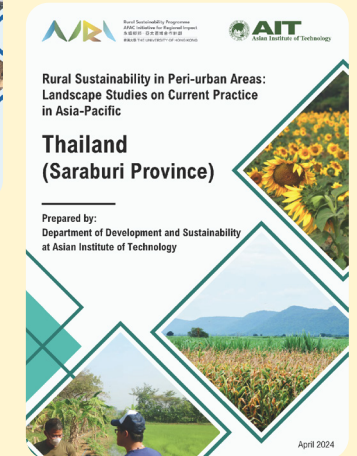
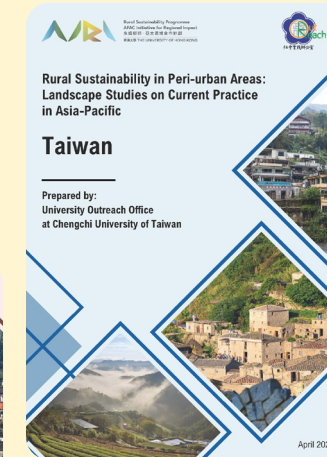
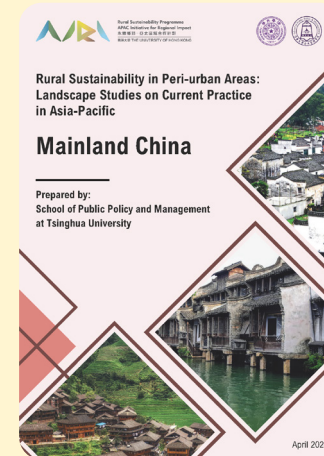
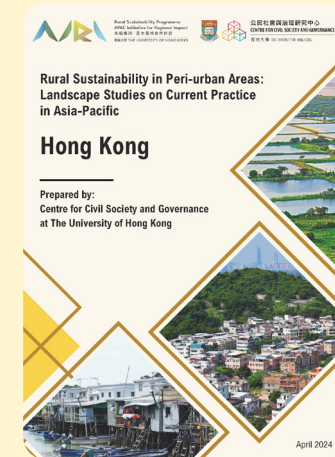
International Partnership for the Satoyama Initiative (IPSI)

2.4 NETWORK'S CORNERSTONE KNOWLEDGE IN RURAL REVITALISATION

To understand the diverse pathways to rural sustainability in the Asia-Pacific region, the consortium examined trends in the rural socio-economic and policy landscape of Hong Kong, Mainland China, Taiwan and Thailand and identified major strengths and challenges for rural revitalisation. This set a good foundation for collaborative mutual learning and support among the four jurisdictions.

	Hong Kong	Mainland China	Taiwan	Thailand
 <p>STRENGTHS</p>	<ul style="list-style-type: none"> • Strong role of civil society • High urban-rural connectivity 	<ul style="list-style-type: none"> • Confucian cultural heritage • Centralised political regime • Rural collective ownership system 	<ul style="list-style-type: none"> • People-centric governance • High capabilities in technology and ICT 	<ul style="list-style-type: none"> • Diversification of the agricultural sector • Community-based natural resource management
 <p>CHALLENGES</p>	<ul style="list-style-type: none"> • Opportunity for a comprehensive rural land use plan and strategy • The need for innovative ideas on rural revitalisation from all sectors 	<ul style="list-style-type: none"> • In need of more collective action • Significant urban-rural income gap 	<ul style="list-style-type: none"> • Economic deceleration constraining youth's participation • In need of mechanisms for community engagement in sustainable rural planning 	<ul style="list-style-type: none"> • Pollution from industries • Population growth leading to natural resource competition
	<p>Common Challenges:</p> <ul style="list-style-type: none"> • Aging population and rural labour shortage • Scarcity of arable land • Climate change and natural disasters 			

Rural Sustainability in Peri-urban Areas: Current Practice in Asia-Pacific



Download reports

3 THE FELLOWSHIP JOURNEY

- 3.1 JOURNEY STEPS**
- 3.2 KNOWLEDGE AND PERSPECTIVE DEVELOPMENT**
- 3.3 PROBLEM-SOLVING MINDSET AND SKILLSET TRAINING**
- 3.4 ACTION PROPOSAL INCUBATION AND COMPETITION**
- 3.5 SHOWCASING AND SHARING**

3.1 JOURNEY STEPS

With an aim to empower and connect thought leaders and exceptional practitioners from across the Asia-Pacific region who aspire to be Change Fellows spearheading urban-rural integration and rural sustainability, the four universities jointly organised a one-year incubation programme “Urban-Rural Sustainability Fellowship 2022-23”.

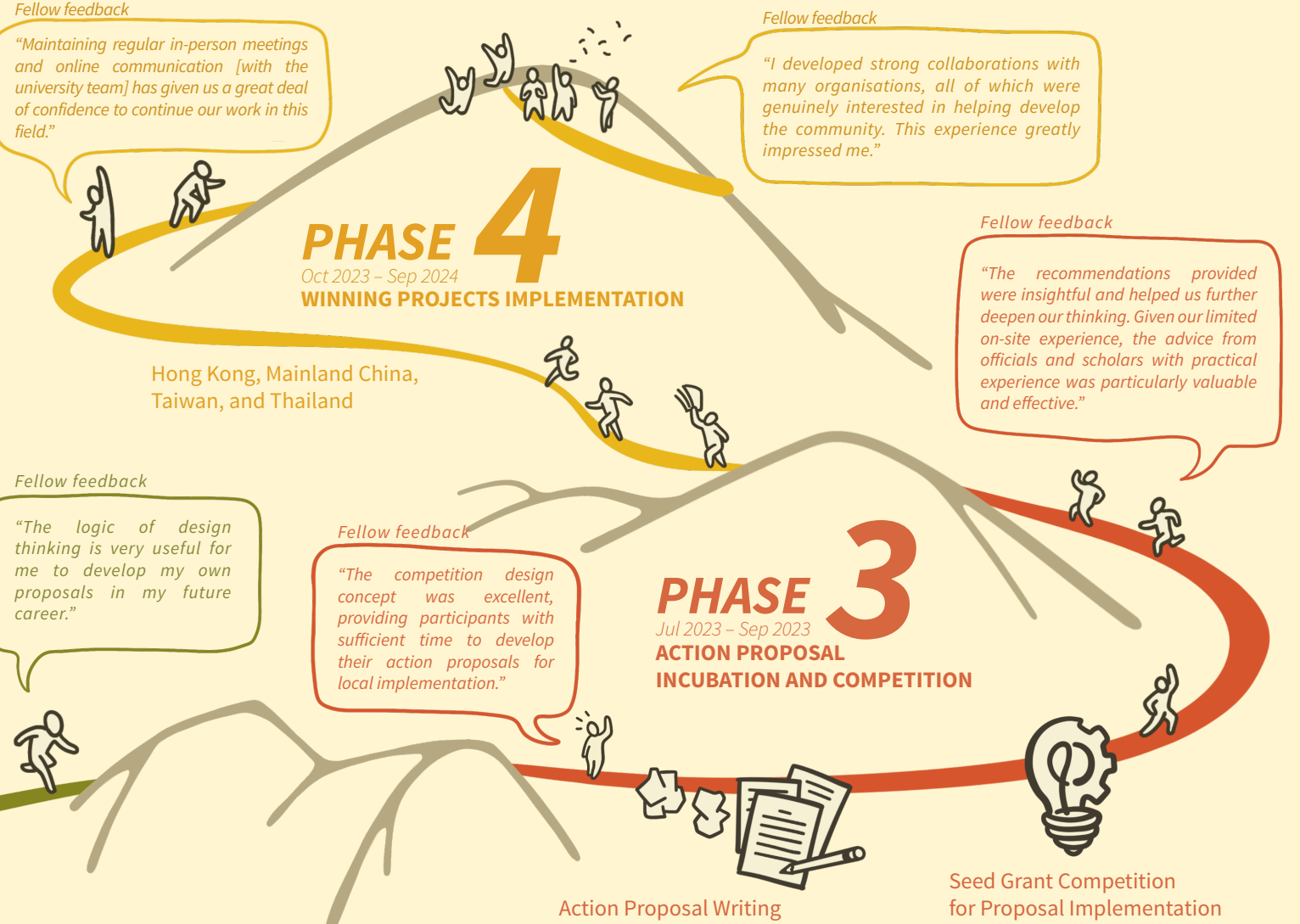
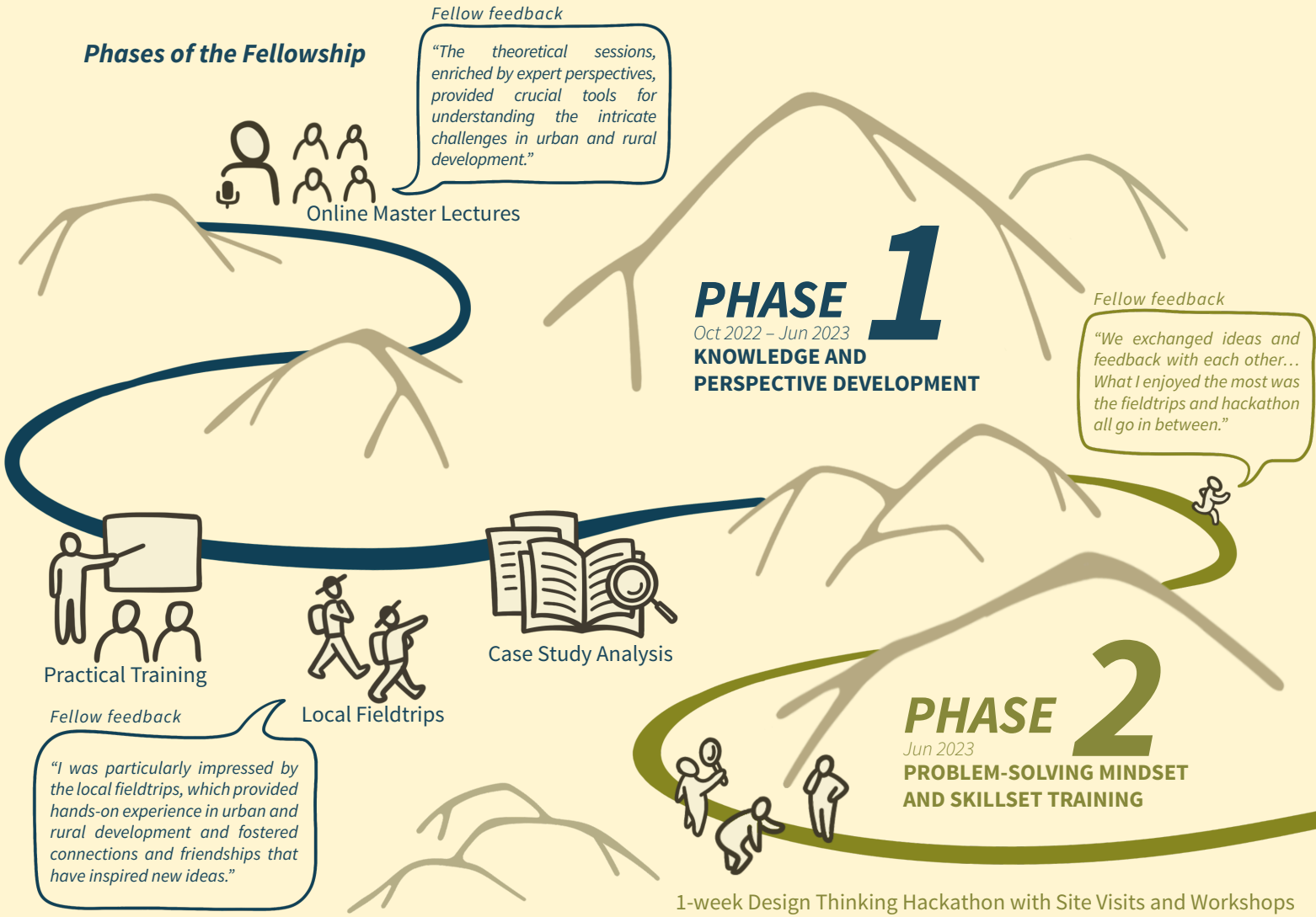
The Fellowship started with four co-designed training modules that together covered the key pillars of rural sustainability. These were followed by a 1-week experiential Hackathon with a series of site visits and workshops held in Hong Kong to train up the Fellows’ problem-solving mindset and skillset. With the knowledge and skills gained, each Fellow developed an individual rural action project proposal. To facilitate real impacts from distinguished Fellows, a competition was organised to select four winning proposals to receive a seed grant for project implementation in Hong Kong, Mainland China, Taiwan and Thailand.

34 Fellows and 58 Associate Fellows were selected from 133 applicants. Among them were young professionals, entrepreneurs, government officers, NGO practitioners, university professors and researchers, fostering a dynamic cross-sectoral and cross-disciplinary co-learning community. Fellows and Associate Fellows are listed in Appendix I and Appendix II respectively.

34
Fellows

58
Associate Fellows

Phases of the Fellowship



3.2 KNOWLEDGE AND PERSPECTIVE DEVELOPMENT

Module 1: Rural Assets and Governance



ONLINE
MASTER
LECTURES

Rural Systems, Rural Developmental Challenges and Community Capitals

“Rural areas are politically important and increasingly contested spaces for environmental conservation, sustainable development, food and energy security, and social justice goals.”

Dr. Jessica WILLIAMS, The University of Hong Kong

*“We have a two-pronged challenge for addressing energy poverty and energy crisis: One is to **make energy accessible** to the marginalised population and the other is to **ensure cleaner energy** for them.”*

Professor Mokbul M. AHMAD, Asian Institute of Technology

Village Planning and Governance

*“China’s Rural Revitalisation Act regulates village development through the preparation and implementation of **legally binding village plans** that facilitate classified and orderly land use according to local conditions.”*

Professor Chengzhi YIN, Tsinghua University

Rural Communities and Sustainable Development

*“In Taiwan, we see many initiatives driven not by the government but by society itself, such as **‘solidarity agriculture’**. We have numerous associations working to address the collective action problems faced by small-scale farmers.”*

Professor Ching-Ping TANG, Chengchi University



Hong Kong

Rural Planning and Management Study Tour to the Northern Metropolis



Mainland China

Field Research in Miyun on Modernization of Agriculture and Rural Areas



Taiwan

Ethno-tourism in Wulai



Thailand

Environmental Challenges for Rural Development Fieldtrip to Saraburi



PRACTICAL
TRAINING

Mapping United Nations Sustainable Development Goals (UNSDGs) and Preparing a Policy Brief

- Relate pressing local rural challenges with the most relevant UNSDGs
- Learn useful models and tips for preparing a policy brief



LOCAL
FIELDTRIPS

Module 2: Environment and Resource Management



ONLINE
MASTER
LECTURES

Roles of State, Market, and Civil Society in Environmental Resource Management

“Aboriginal tribes in rural areas have their own traditional organisations, power, culture, and legacies. **To better organise collective actions for water in rural areas, it’s important to consider using society power** rather than solely relying on state or market power.”

– Professor Shiu-Shen CHIEN, Taiwan University

Ecosystem Assessment and Biodiversity Management

“**Indicators of Resilience in Socio-ecological Production Landscapes and Seascapes**’ is a set of 20 indicators for local or regional communities to assess the social-ecological resilience of production landscapes and seascapes.”

– Dr. Maiko NISHI, Secretariat of the International Partnership for the Satoyama Initiative, United Nations University Institute for the Advanced Study of Sustainability

Co-operative Approaches for Enhancing Mitigation against Climate Change and Air Pollution

“**LEAP (Low Emissions Analysis Platform)** allows users to quantify greenhouse gas emissions and **IBC (Integrated Benefits Calculator)** is an add-on tool that relates these emissions, both historically and in the future, to exposure to air pollution and impact on climate. This can be used as a tool to provide evidence to policymakers.”

– Dr. Jessica SLATER, Stockholm Environment Institute

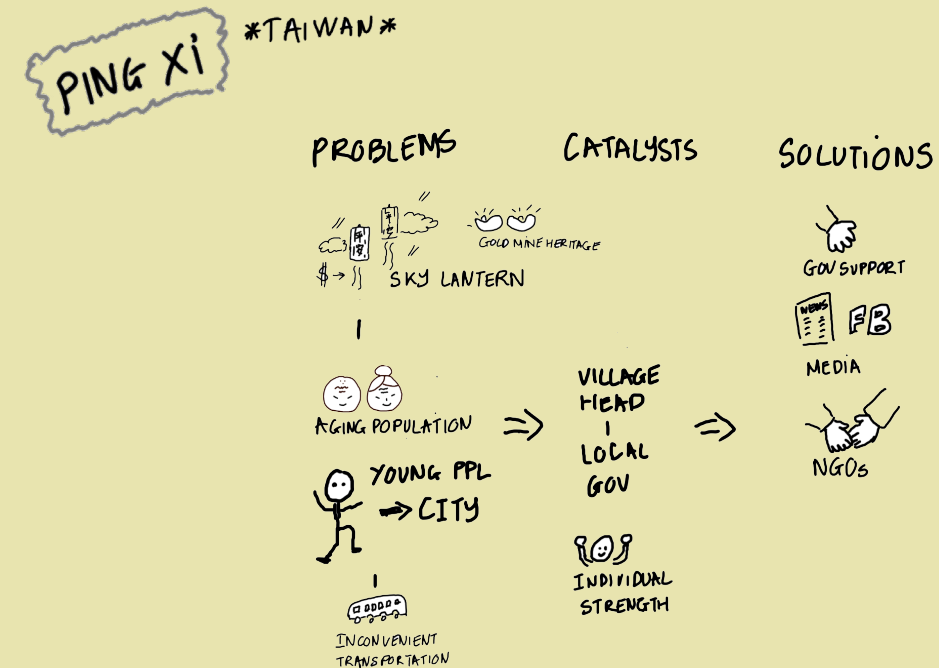
Role of Science and (Geo)Data for Environment and Resource Management Policy

“**Remote sensing** is not just used for observation, measuring, and quantification, but can also **derive data for modelling** to help us understand what has happened in the past, and what will likely be happening in the future.”

– Associate Professor Salvatore VIRDIS, Asian Institute of Technology

Thinking Strategically: Soft System Methodology (SSM) for Problem-solving

- Appreciate SSM for its holistic and participatory approach to real-world issues
- Apply SSM in analysing rural revitalisation challenges



PRACTICAL
TRAINING

Module 3: Social and Cultural Sustainability



ONLINE MASTER LECTURES

Rural Social Governance in East Asia

“When we deal with any public affair issues in rural areas, clan is very important because sometimes clan **can serve as a solidary group in public goods provision**. Clan can mobilise social pressure to make local government officials accountable.”

– Professor Zhenqing ZHENG, Tsinghua University

Rural-Urban Disparities; New Rural Vulnerable and Marginalised Groups

“Why do many developing countries in Africa, Asia, and South America have more informal settlements? Because **the loss of land and the loss of rural livelihood forced the rural population into low-income, informal employment**.”

– Associate Professor Thi Phuoc Lai NGUYEN, Asian Institute of Technology

International Social Work on Rural Education, Health, and Gender Equality

“I lobbied the government and community, providing social education to raise awareness about female kidnapping. **Gender discrimination cannot be eradicated overnight**. It took me six years to persuade the government.”

– Assistant Professor Ping-Hsien LIN, Chung Shan Medical University

Importance of Cultural Landscape and Heritage for Rural Revitalisation

“In 1992, the World Heritage Convention defined and recognised **cultural landscapes as ‘combined works of nature and of man’**, emphasising the interaction between nature and human. The community co-evolves with the environment, bringing a lot of interesting and valuable heritage.”

– Ms. Katie CHICK, The University of Hong Kong

“Subak is a belief system connecting the communities. They believe that god likes rice, so they continue to grow it. **With these beliefs and socio-cultural elements in their system, they can maintain public good, which attracts tourists**.”

– Professor Ching-Ping TANG, Chengchi University

Identifying Actions and Resources for Realising Rural Revitalisation Ideas

- Suggest actions for different timeframes
- Identify suitable resources from different sectors



PRACTICAL TRAINING



Hong Kong

Tai O Cultural Landscape and Its Management through Community Partnerships and Corporate Involvement



Mainland China

Field Research in Chongli, Hebei on Beautiful Countryside Construction, Agricultural Industry Development, and Olympic Economy



Taiwan

Fieldtrip to Fuxing: Atayal Tribe's Bamboo Forest and Millet Field Management and Development



Thailand

Fieldtrip to Bang Khan Community, Khlong Luang District, Pathum Thani Province: Challenges Faced by Marginalised Groups in Peri-urban Slum Area



LOCAL FIELDTRIPS

Module 4: Rural Economy, Innovation and Revitalisation



ONLINE
MASTER
LECTURES

Poverty Reduction and Case Stories

“China established a national unified information system for poverty alleviation. All the poverty-stricken people should be registered in the database system. This allowed China to gather poverty data specifically from each person, household and village for the first time in history.”

– Dr. TAN Weiping, International Poverty Reduction Centre in China

Food Policy, Value Chains and Sustainable Consumption in the Food and Beverage Industry

“If we want a more sustainable food system, we must look at the root cause, and it is very much about the farming stage. There can be great positive impact by farming more regeneratively or using agroecological/organic systems.”

– Ms. Heidi SPURRELL, Future Green

Innovative Business Models with Local Knowledge and Technology

According to projections by the United Nations, more than 70% of the world’s population will live in urban areas by 2050. What will our relationship with rural areas look like? How can we develop suitable businesses and social designs that really help sustain our cultural and ecological DNA within human civilisation?”

– Professor Shenglin Elijah CHANG, Taiwan University



PRACTICAL
TRAINING

Futurecasting and Systems Thinking

- Identifying future possibilities and plan proactive actions in advance
- Anticipate potential first-order, second-order and third-order impacts of the actions



Hong Kong

Pearl Farm Visit on Innovative Aquaculture



Mainland China

Field Research in Nanjian, Yunnan on Green and Beautiful County, Pocket Parks, Rural Tourism and High-tech Enterprise Development



Taiwan

Fieldtrip to Daxi and Longtan on Taoyuan Local Enterprises and Sustainable Business Ideas



Thailand

Fieldtrip to Ban Nong Khoa, Tha Muang District, Kanchanaburi Province: Innovative Farming and Value-added Traditional Handicraft



LOCAL
FIELDTRIPS

3.3 PROBLEM-SOLVING MINDSET AND SKILLSET TRAINING

Hackathon: Empathise with Nature

TALK:
Rural Revitalisation from an Urban Commons Perspective (by Professor Wai-Fung Lam)



Fellows were introduced the concept of the Commons and the commoning strategies for rural revitalisation.

WORKSHOP:
Zentangle Workshop (by Kadoorie Farm and Botanic Garden)



The Zentangle art workshop helped the Fellows connect with nature through immersive nature walk and contemplative drawing.

VISIT:
Mai Po Inner Deep Bay Ramsar Site (by Dr. Billy Hau)



Fellows were introduced the policy, planning and land use conflict management for the Mai Po Inner Deep Bay Ramsar Site wetland conservation.



Fellows taking tree measurements for estimating carbon storage in mangroves.



Fellows investigating egret and heron habitat preference.



Fellows analysed the survey data and presented their findings on Mai Po's ecological conservation.

Hackathon: Define Rural Problems

VISIT:
Rural Revitalisation in Lai Chi Wo



The Lai Chi Wo visit helped the Fellows identify community capitals for tackling rural challenges.



Fellows visited the rehabilitated farmland to learn about the agricultural-led village revitalisation.

WORKSHOP:
Village-based Economy in Lai Chi Wo and Mui Tsz Lam



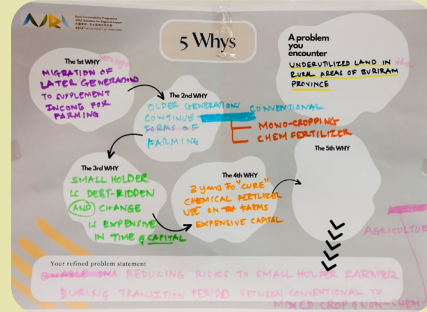
Community-led workshops helped the Fellows understand rural business opportunities.



The visit to Mui Tsz Lam village introduced campsite development as a different revitalisation strategy.

Hackathon: Ideate Solutions

Workshop:
Ideation of Solutions and Preparation for Pitching



Fellows worked on a group exercise to ideate solutions for rural challenges of their home region.

Visit:
Rural Tourism Experience at Cha Kwo Ling Village (by Walk in Hong Kong)



Fellows were led by a cultural tourism enterprise to learn about the history and culture of Cha Kwo Ling.



Local NGO introduced their services in Cha Kwo Ling and the impact of the government's redevelopment plan on the village.

Visit:
Rural Tourism Experience at Kwong Pan Tin Tsuen (by Walk in Hong Kong)



Fellows learnt about Kwong Pan Tin Tsuen's artistic approach to revitalisation.



Local villager introduced Kwong Pan Tin Tsuen's rural lifestyle to the Fellows.

Hackathon: Prototype Ideas

VISIT:
BSF Hatch at EcoPark



Fellows visited BSF Hatch at EcoPark to learn about modern bioconversion technology to recycle local organic waste into agricultural inputs.



Fellows learnt about social innovation on local agro-food system through the brand LoCoFARMS developed by HKU-CCSG.

Debriefing:
Prototyping



Fellows organised their project ideas into a business model.

Hackathon: Test the Prototypes

Pitching: Group Presentation of Action Proposal Ideas



Each of the eight project teams presented their rural revitalisation action proposal. The eight proposals addressed a diversity of rural challenges such as environmental degradation, ageing population, unsustainable agriculture, and declining rural industries.

Commentators

Professors from The University of Hong Kong, Tsinghua University, Chengchi University and the Asian Institute of Technology, the former Secretary for Environment of the HKSAR Government, the Director of FarmShare, and keynote speakers of AIRI Regional Forum I

Projects Presented

Hong Kong



Saving Hong Kong Oysters

Lau Fau Shan, Hong Kong | Oyster industry advancement



Thriving Tai O

Tai O, Hong Kong | Intergenerational co-living mentorship programme

Mainland China



Panda Ba

Guanba, Sichuan, Mainland China | Community-based natural education enhancement



Shared Brewery

Wuning, Jiangxi, Mainland China | Winemaking technique optimisation

Taiwan



Sea Yard: Seaside Village Revitalisation Service Centre

Turtle Island, Taiwan | Digital platform for tour bookings and chatbot services



Sustainable Ground Water Festival

Kouhu, Yunlin, Taiwan | Groundwater exploitation awareness programme

Thailand



Leaving No One Behind

Buriram, Thailand | Matchmaking for organic farming



Water 4 All

Village No 2 Huai Bong, Chaloeam Phra Kiat, Saraburi, Thailand | Cooperative water management for agricultural production

3.4 ACTION PROPOSAL INCUBATION AND COMPETITION

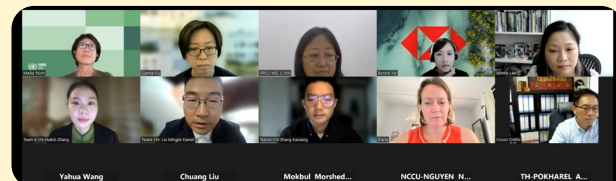
After the Hackathon, each Fellow developed an action proposal for tackling rural sustainability challenges in their home region according to the following principles:

1. Address the rural sustainability challenges with a holistic and innovative approach
2. Deliver benefits to two or more UNSDGs and bring positive environmental, social and economic impact
3. Enhance community resilience by improving the community's ability to adapt and respond to external risks and pressures
4. Engage relevant stakeholders and utilise existing community resources
5. Be feasible, scalable, replicable, and have the potential for research and policy impact

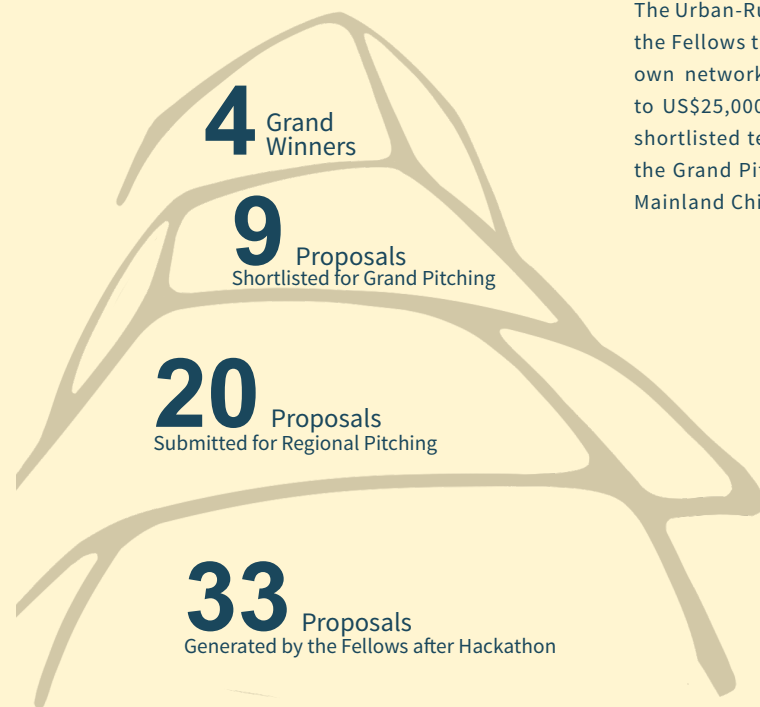
The Urban-Rural Sustainability Action Proposal Competition was organised to encourage the Fellows to turn proposals into actions. Fellows were invited to form teams with their own networks and submit an enhanced proposal to compete for a seed grant of up to US\$25,000. The proposals submitted were first shortlisted by Regional Panels. The shortlisted teams were invited to further enhance their ideas for the Grand Pitching. At the Grand Pitching, the Judging Panel selected one winning proposal from Hong Kong, Mainland China, Taiwan and Thailand respectively for implementation.



Regional Pitching



Grand Pitching



Regional Panels

Hong Kong

- **Professor Wai-Fung Lam**, Director, Centre of Civil Society and Governance, HKU (Panel Chair)
- **Mr. Andrew Kwok**, Principal Manager, Countryside Conservation Office, Environment and Ecology Bureau, HKSAR Government
- **Ms. Carmen Chan**, Committee Chair, New Territories Traditional Culture Committee, Heung Yee Kuk
- **Mr. Ken So**, Chief Executive, The Conservancy Association

Mainland China

- **Professor Yuhua Wang**, Professor, School of Public Policy and Management, Tsinghua University; Executive President, China Institute for Rural Studies, Tsinghua University (Panel Chair)
- **Dr. Ruijuan Zhang**, Associate Research Fellow, Rural Development Institute, Chinese Academy of Social Sciences
- **Dr. Xiaoli Wang**, Associate Professor, Department of the Social and Ecological Development, Party School of the Central Committee of CPC
- **Dr. Liangzhen Zang**, Associate Research Fellow, Institute of Agricultural Economics and Development, Chinese Academy of Agricultural Sciences

Taiwan

- **Professor Ching-Ping Tang**, Distinguished Professor of Political Science, Chengchi University (Panel Chair)
- **Assistant Professor Ping-Hsien Lin**, Department of Social Work, Tunghai University
- **Ms. Man-Chi Tang**, Deputy General Manager, SinoPac Holdings
- **Mr. YangShian Chang**, Project Manager, University Outreach Office, Chengchi University
- **Ms. Chen Wei Han**, Co-founder, QK Studio

Thailand

- **Associate Professor Thi Phuoc Lai Nguyen**, Program Chair of Development Planning Management and Innovation (DPMI), Asian Institute of Technology (Panel Chair)
- **Dr. Kim Neil Irvine**, Associate Professor, Thammasat Design School, Faculty of Architecture and Urban Planning, Thammasat University
- **Khun Ravadee Prasertcharoensuk**, Director of Sustainable Development Foundation, Thailand
- **Dr. Darin Khongsatjaviwat**, Senior Lecturer in Rural Development and Rural Administration, Department of Political Science and Public Administration, Naresuan University

Grand Judging Panel



Dr. Diane ARCHER
Senior Research Fellow,
Stockholm Environment Institute



Professor Shiu-Shen CHIEN
Distinguished Professor,
Department of Geography,
International Degree Program
of Climate Change and
Sustainable Development,
Taiwan University



Ms. Xin LI
Deputy Director-general,
International Poverty
Reduction Center in China



Dr. Maiko NISHI
Research Fellow,
International Partnership for the
Satoyama Initiative,
United Nations University Institute for
the Advanced Study of Sustainability



Ms. Bonnie YIP
Associate Director,
Sustainability,
Asia Pacific, HSBC

Competition Submissions, Winners and Finalists

Hong Kong

WINNER

Discover Rural Living Culture — Exploration of Rural Sustainable Development in Hong Kong

Xing Wenwei (Project Leader), Leung Chin Pui Perry, Lok Wai Ying, Cheung KaKin

Sheung Tsuen, Yuen Long, Hong Kong | Promotion of rural tourism and food

Utilise the rich social capital of a restaurant in Sheung Tsuen to develop cultural tourism for the village and support local farmers



FINALIST

Shell-we-connect: Advancing Oyster Networks, Industry, and Open Water Resources in Lau Fau Shan

Lee Chi Hang Haven (Project Leader), Kong Anthony, Liang Anqi Angel, Wong Kit Man Agnes, Tinny Chu

Lau Fau Shan, Deep Bay, Hong Kong | Oyster industry advancement

Uplift Hong Kong's oyster industry through community engagement, diversification of the industry and reconnecting it with the young generation



OTHER SUBMISSION

Sustainable Solidarity Impact Platform (SSIP)

Castro Luisa Tan (Project Leader), Lau Ho Yung Francis, Md Abdullah Al Mamun

All 18 districts, Hong Kong | Online platform for sustainable social impact

Mainland China

WINNER

Nanjian Tiaocha

Mao Enhui (Project Leader), Zhang Huibin, Liu Mingjie, Zhang Kaixiang, Kong Yao

Nanjian, Dali, Yunnan, Mainland China | Innovative revival of tea culture

Harness the Yi ethnic culture to empower Nanjian tea industry through “Nanjian Tiaocha” brand IP and product sales on live streaming platforms



FINALIST

Future Village Innovation Lab

Chen Jingjing (Project Leader), Liu Jin, Cao

Mengdi, Liu Chuanlei, Chen Minli, Yang

Huanhuan

Hangzhou city and other villages, Mainland China | Comprehensive rural training

Empower rural practitioners through training programmes, villagers forum and Hackathon, community building and networking, and innovative projects incubation



FINALIST

Panda.Ba: A community-based nature education project of Guanba Village in the National Park

Cao Chunkai (Project Leader), Wu Haiming,

Sun Yiyun, He Haiyan, Meng Ji, Yi Yuanyuan

Guanba, Pingwu, Sichuan, Mainland China | Nature education enhancement

Enhance Guanba Village's nature education by standardising curriculum design, developing training toolboxes, and conducting a social marketing campaign



OTHER SUBMISSIONS

Carbon Sink Operation and Mechanized Retrofitting of Rural Bamboo Forests—Practice and Exploration of Jingxi Village in Anji County

Lu Wei (Project Leader), Fu Jinhe, Zhu Weirong, Yang Jingyi, Huan Meili, Han Aixi

Jingxi, Anji, Zhejiang, Mainland China | Forestry mechanisation

Rural Business Schools

Peng Bo (Project Leader), Deng Yujiang, Chen Yuhan, Li Hanbing

Yucun, Anji, Zhejiang, Mainland China | Rural industry and skills development

The Dalong Gardian Camp

Pu Xi (Project Leader), Hu Fei, Yang Jia, Hu Guoliang, Yao Lan, Li Qiuming

Anji, Zhejiang, Mainland China | A base for experiential tourism and sustainability events

Taiwan

WINNER

Seaside Village Revitalization Information Service Center: A case design for the travel route in Turtle Island Village Community

Huang Chien-Tu (Project Leader), Chen Yun-Cheng, Li Hua-Syuan

Turtle Island and Toucheng, Yilan, Taiwan | Digital advancement for rural tourism

Promote sustainable tourism for Turtle Island by creating a travel booking website with simplified booking process and a chatbot for cultural participation experiences



FINALIST

Mkmatuy Sustainability Plan

Yang Tzu-Yi (Project Leader), Lin Xuan-Jin

Yixing Village, Jianshi, Hsinchu, Taiwan | Indigenous cultural tourism

Collaborate with cooperative and schools to develop Atayal culture experiential activities for the sustainable development of the Mkmatuy Tribe



OTHER SUBMISSIONS

Activating Local Community: Diversified Promotions of Eel Products, Local Education and Human Services

Hung Yu-Chun (Project Leader), Hung Yi-Tzi, Guo Jing-Xin, Hung Cheng-Feng

Punan Village, Kouhu, Yunlin, Taiwan | Eel industry advancement

Island Hopping Briefing Education

Liu Shu-Yu (Project Leader), 明心, 柏論, 啟宏

Penghu, Taiwan | Presentation skills training for rural students

LIVE, LIFE, LOVE: Let people think more about death

Lin Xuan-Jin (Project Leader)

Shiding District, New Taipei City, Taiwan | Rural exhibition on death contemplation

Power to the People: Shaping Our Policies (withdrew during competition)

Leader: Tsai Ya-Hsaun (Project Leader), Lin Ying-Tzu, Tseng Liang-Che, Lin Yi-Chun, Lin Jun-Hong, Chang Che-Hao

Zhuqi Township, Chiayi, Taiwan | Citizen deliberation contest

Thailand

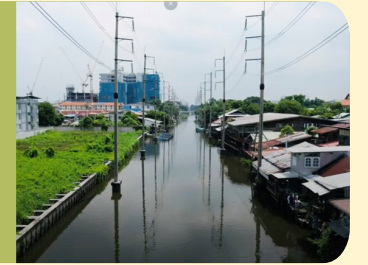
WINNER

Saving Roots & Routes: The Hua Ta Khe Community Regeneration Project

Siwarat Pattanasri (Project Leader), Nattapon Junteenok, Arun Kanchan, Raashi Shestra

Hua Ta Khe, Bangkok, Thailand | Community eco-regeneration

Enhance Hua Ta Khe community's sustainability and livability through smart farming, eco-friendly travel routes, and environment improvement



FINALIST

Youth Empowerment through Green Agriculture (YEGA) for rural revitalization in the Thai Berg community

Surendra Tiwari (Project Leader), Tran Thi Nhu Ngoc, Punchaya Raksasakun, Roengnarong Sukklud, Kanokchai

Mangmesup, Areerat Mansalung

Ban Khok Salung, Phatthana Nikhom, Lopburi, Thailand | Sustainable agriculture and youth empowerment

Promote sustainable agriculture by establishing a centre for agricultural education and marketing, and encouraging home farming



OTHER SUBMISSIONS

Strengthening Resettled People's Livelihood Through Community Farming in Pathum Thani Province

Tran Thi Nhu Ngoc (Project Leader), Kijart Onngerthayakorn, Punchaya Raksasakun, Hayat Ullah, Borey Koemseang, Nikorn Asakati

Klong Luang, Pathumthani, Thailand | Sustainable farming for resettled community

Surya Astra: Energizing Sustainable Farming

Arun Kanchan (Project Leader), Sivanappan Kumar, Watcharapong Rayayoi, Aphiwat Sukphoang, Ranadheer Mandadi, Mohammed Ershadullah

Tha Maka, Kanchanaburi, Thailand | Solar system and education for farms

"You Give, We Grow"- Innovative Agro-Matchmaking Program

Krittawit Krittayaruangroj (Project Leader), Jiraya Phumiratanaprapin, Pradthana Jaipong, Saiwaroon Tiranonrungrueng, Phop Visessrojana, Chanida

Vongsrimongkhol

Baan Charoensuk, Buriram, Thailand | Agro-matchmaking and community-based tourism

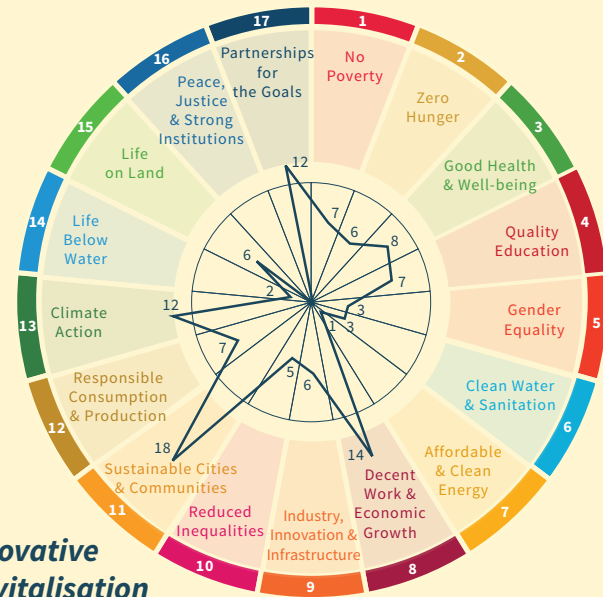
3.5 SHOWCASING AND SHARING

The Fellows and Associate Fellows prepared a collection of case studies on collaborative rural revitalisation. The process allowed them to learn more about rural issues and solutions and the importance of collaboration. Each Fellow also developed an individual rural revitalisation action project proposal to address rural challenges in their home regions through multistakeholder collaboration. The proposals and best practice cases are listed in Appendix III and Appendix IV respectively.



Approaches in Case Bank for Best Practices

- Efficient and Responsible Use of Natural Resources
- Capacity Building, Training and Education
- Community Engagement and Empowerment
- Promotion of Culture and Art
- Infrastructure Development
- Economic Diversification and Entrepreneurship Development
- Technological Advancement



SDGs Addressed in Innovative Solutions for Rural Revitalisation

Numbers in dark blue in the inner circle indicate the number of action proposals

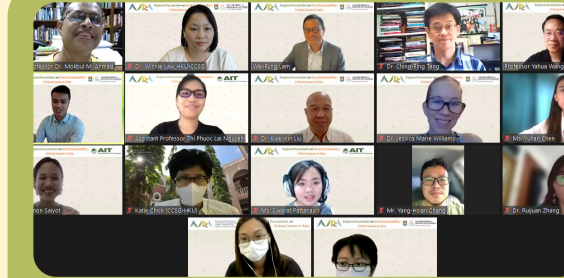


Case Bank for Best Practices



Innovative Solutions for Rural Revitalisation

AIRI organised regional meetings annually to bring together experts and practitioners from the Asia-Pacific region to discuss critical issues related to rural sustainability and to share information and experiences. These events also served as an important platform for networking and collaboration.



Regional Roundtable – Critical Issues in Asia



Regional Symposium – Rural Sustainability in the Asia Pacific



Regional Forum I – Bridging Knowledge and Action



Regional Forum II – Sustaining Rural Revitalisation



4 IMPACT STORIES

- 4.1 Discover Rural Living Culture
— Exploration of Rural Sustainable Development in Hong Kong**
- 4.2 Nanjian Tiaocha (南澗跳茶)**
- 4.3 Seaside Village Revitalization Information Service Center:
A case design for the travel route in Turtle Island Village Community**
- 4.4 Saving Roots & Routes:
The Hua Ta Khe Community Regeneration Project**

4.1 Discover Rural Living Culture—Exploration of Rural Sustainable Development in Hong Kong

Hong Kong Fellow Olivia, with an educational background in public policy and working experience in NGO management, was initially inspired for her rural project during the Hackathon when she met Perry at his third-generation family restaurant in Sheung Tsuen, Yuen Long.

Learning that Sheung Tsuen is a traditional village of historical and cultural significance, yet little known by Hong Kong people, Olivia saw its potential for revitalisation. She formed a team with Perry and experts in culture and ICT to initiate the project “Discover Rural Living Culture” to promote Sheung Tsuen’s heritage, tourism and agriculture by utilising the rich social capital of the rural restaurants. This approach features a collaboration model that brings together the resources and expertise of the locals and the wider community of interests for the revitalisation intervention.

The team established a company and an association for project implementation and scale-up. It curated and organised cultural tours at Sheung Tsuen for locals and other visitors. Residents and local community stakeholders such a local farmer-cum-artist were engaged as tour guides and workshop facilitators. It also developed online VR tours and publications to introduce the village history and heritage and supported local farmers by using local ingredients in the restaurant. Through active engagement with government officials and district councillors, the team has enhanced its capacity to deliver further impact.



Tour participant feedback

“In the heart of Hong Kong’s countryside, we discover a vibrant community where the warmth of its people transcends the coldness of concrete, reminding us to slow down and cherish the beauty of life amidst urban chaos.”



Website: <https://www.village-vibe.org/>
Instagram: [villagevibehk](https://www.instagram.com/villagevibehk)

4.2 Nanjian Tiaocha (南澗跳茶): A Convergence of Minority Culture and the Tea Industry

Mao Enhui, a Fellow of the AIRI programme from Mainland China and a PhD student at Tsinghua University's School of Public Policy and Management, has been focusing on environmental governance and industrial development in rural areas for over a decade. During her field research in Nanjian Yi Autonomous County, Yunnan province, she found that this county possesses a unique minority culture and exceptional conditions for tea industry development. However, due to its remote location, people's conservative views and inadequate educational resources, the local cultural and resource advantages have not been fully realised.

The team leveraged the cultural and industrial characteristics of the region and developed a distinctive regional public brand "Nanjian Tiaocha". The team aspired to promote the local minority culture and tea products to the Asia-Pacific region through cross-border e-commerce live-streaming. The exploration in the Chinese mainland market during the first stage has accumulated invaluable industrial experience for them. The project aimed to integrate tea tourism and stimulate local industrial development. The highlight of this project is that the threshold for local people and enterprises to join is relatively low, and digital technology is used to overcome transportation and information barriers and help the local people achieve rural revitalisation.

The team garnered over 10,000 views on the first day of the live stream and gained 1,000 followers in three days. They have collaborated with a marketing team and Tsinghua University's Tulin Tea Factory in Yunnan. A total of over 2,000 commemorative tea items were sold through online sales in live broadcasts and offline sales in alumni associations, with sales totaling approximately 200,000 RMB. The team is also seeking to collaborate with a professional live streaming company in Beijing for a market-oriented operation model.



Customer feedback

"We used to only know about Tsinghua University, but we didn't know that Tsinghua University also has such good tea. The Nanjian Tiaocha brand, based on Tsinghua University's poverty alleviation story, embodies the social responsibility of a university. Only when the industry develops, can the people's wallets be filled."

4.3 Seaside Village Revitalization Information Service Center: A case design for the travel route in Turtle Island Village Community

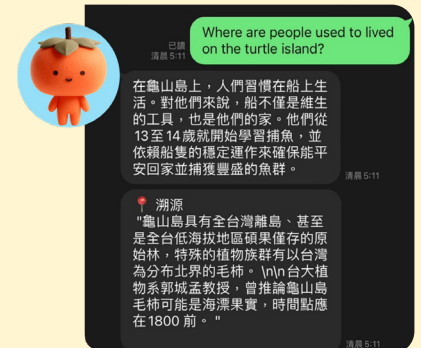
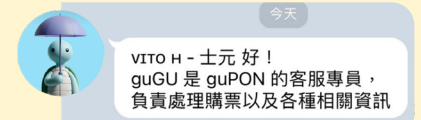
Taiwan Fellow Huang Chien-Tu, also known as Bosco, comes from a family that lived on Turtle Island for generations. However, in 1977, five years before his birth, the government relocated his family to Daxi, Yilan. Growing up on the mainland, Bosco could only glimpse his ancestral home across the sea, remaining disconnected from his roots. The passing of his beloved grandmother in 2016 sparked an urgent desire in Bosco to reconnect with his heritage. Teaming up with Hsin-Yuan, another second-generation member of a relocated family, they embarked on a mission to gather stories about their forgotten community.

In their efforts, Bosco and his team uncovered significant issues around sustainable tourism, noting a disconnect in management practices and information sharing among the government, private sector, and local citizens. Partnered with Chen Yun-Cheng, Lucky, and Li Hua-Syuan, who specialise in service design and interactive web development, they created a one-stop platform connecting tourists, businesses, and locals, reducing costs while fostering transparency.

This platform features a curated travel route for Turtle Island, which has gained popularity, attracting visitors and generating economic opportunities for the community. The active involvement of Turtle Island's former residents, younger generations, local chefs, and food vendors ensures an authentic and immersive travel experience. The information platform's number of users reached 150,000. 1,000 community members directly benefited from the project through increased cash flow, foot traffic, and exposure. The team is now expanding the project by creating additional routes.

Tour participant feedback

"Even after several generations of relocation, the younger generation still displays great enthusiasm, and the way the community's resources are integrated truly reflects the Turtle Islanders' identity and love for their heritage."



Website: <https://www.gugu.club/>

4.4 Saving Roots & Routes: The Hua Ta Khe Community Regeneration Project

The “Saving Roots and Routes” project was conducted as a pilot community-based peri-urban revitalisation initiative aimed at restoring the Hua Takhe community’s agricultural and cultural heritage, which has been eroded by urbanisation. Most of its population originates from the area but has lived in non-land tenure traditional houses. This project was led by Siwarat Pattanasri, a Thailand AIRI fellow, and the project team members, in collaboration with the AIRI team from the Asian Institute of Technology (AIT). Hua Takhe is located along the Pravet Burirom canal in Lat Krabang, Bangkok, and was once known for its traditional agriculture and water-based lifestyle.

The project received strong support from local governmental offices, community development organisations, universities, local community, students, and artisans. It contributed to reviving the local cultures and traditions while promoting sustainable tourism and environmental conservation. The project established agricultural learning centres and cultural initiatives, such as the community’s “Beautiful Frontyard Contest”, to boost local engagement and eco-tourism. Training programs on traditional farming, vegetable gardening, and eco-friendly crafts were also offered, empowering residents and involving students and artisans.

The project has had a positive impact as a pilot engine for community revitalisation and eco-tourism promotion for sustainable livelihood through cultural and heritage conservation. It could serve as a strong showcase for similar initiatives in other peri-urban areas across Thailand, balancing tradition with a modern lifestyle.

Local craftsman's feedback

“There are vegetable plots and people who come to visit. We often have foreigners come to visit. They come to see that there are new check-in points over there. It is a place to take pictures, making people walk further. That has created four to five new shops.”



Local community member's feedback

“It [the Beautiful Frontyard Contest] is over, but the villagers continue doing it after the competition ended.”



APPENDIX I LIST OF FELLOWS

The 33 Fellows successfully completed the learning phase of the Urban-Rural Sustainability Fellowship 2022-23 are listed below:

Name of Fellow	Affiliation at Admission	Region
Au Wing Hay Kani	Hong Kong Bird Watching Society	Hong Kong
Bhuridadtpong Arunwasdi	Asian Institute of Technology	Thailand
Cao Chunkai	Beijing Ontopology Technology	Mainland China
Castro Luisa Tan	Institute of Leadership and Management Foundation Ltd.	Hong Kong
Chau Sze Man Gabrielle	Lands Department, HKSARG	Hong Kong
Chen Jingjing	Tusheng Management Consulting Studio of Hangzhou	Mainland China
Choi Chung Yan Joanne	Hong Kong Fair Trade Power	Hong Kong
Hsu Bo-Hsuan	Taiwan University	Taiwan
Huang Chien-Tu	Seabelongings	Taiwan
Hung Yu-Chun	Renzi International Co., Ltd.	Taiwan
Kanchan Arun	Trinity Consultants, Inc. (Dallas, Texas, U.S.A.)	Thailand
Kong Anthony	The University of Hong Kong	Hong Kong
Krittayaruangroj Krittawit	Akelada Hotel and Convention	Thailand
Lee Chi Hang Haven	Urbis Ltd.	Hong Kong
Liang Anqi Angel	EY	Hong Kong
Lin Xuan-Jin	Fu Jen Catholic University	Taiwan
Liu Jin	Peking University	Mainland China
Liu Shu-Yu	Taipei University of Education	Taiwan
Lu Wei	Tsinghua University; Bojin International Cultural Exchange Ltd.; Jiangxi Luxidong Wine Industry Co. Ltd.	Mainland China
Mao Enhui	Tsinghua University	Mainland China
Pattanasri Siwarat	Eastern Economic Corridor Office	Thailand
Peng Bo	Shanghai Center for RimPac Strategic and International Studies	Mainland China
Pu Xi	Beijing Contemporary Art Foundation	Mainland China
Si Thu Lin	Network Activities Group	Thailand
Sun Yiyun	The International Union for Conservation of Nature	Mainland China
Tiwari Surendra	Pokhara University, Nepal	Thailand
Tran Thi Nhu Ngoc	Vietnam National University of Agriculture	Thailand
Tsai Ya-Hsaun	Nanhua University	Taiwan
Tsoi Mang Ting	Chengchi University	Taiwan
Wong Kit Man Agnes	Environmental Protection Department, HKSARG	Hong Kong
Wu Haiming	United Nations Educational, Scientific and Cultural Organization	Mainland China
Xing Wenwei Olivia	Hong Kong Hakka Associations	Hong Kong
Yang Tzu-Yi	Tsing Hua University of Taiwan	Taiwan

APPENDIX II LIST OF ASSOCIATE FELLOWS

The 31 Associate Fellows successfully completed the learning phase of the Urban-Rural Sustainability Fellowship 2022-23 are listed below:

Name of Associate Fellow	Affiliation at Admission	Region
Adhikary Rana Sikshya	Asian Institute of Technology	Thailand
Baskhoro Arie Ekawie	Asian Institute of Technology	Thailand
Cao Mengdi	Tsinghua University	Mainland China
Chen Chia-Chun	Eastern Broadcasting Co., Ltd.	Taiwan
Chen Yuhan	University of Chinese Academy of Social Sciences	Mainland China
Cheng Ka Ching Kary	Deloitte	Hong Kong
Cheng Xiaofeng	University of Chinese Academy of Social Sciences	Mainland China
Cheung Lai Kwan Connie	Sustainable Lantau Office, Civil Engineering and Development Department, HKSARG	Hong Kong
Chiu Chun Yin Ethan	Environmental Protection Department, HKSARG	Hong Kong
Chung Sum Yue Natalie	V'air Hong Kong	Hong Kong
Deita Christopher Van	Asian Institute of Technology	Thailand
Deng Yujiang	Hong Kong Baptist university	Mainland China
Han Aixi	Fudan University	Mainland China
Huan Meili	China Institute for Rural Studies & School of Public Policy and Management, Tsinghua University	Mainland China
Lai Kwan Yui Lilian	Television Broadcast Limited	Hong Kong
Lau Ho-Yung	Environmental Protection Department, HKSARG	Hong Kong
Lee Hoi Yan Pat	Media personnel	Hong Kong
Li Hanbing	Henan University of Technology & Management and Science University	Mainland China
Li Qiuming	Nanjing Agricultural University	Mainland China
Liu Mingjie	Xuhui Design	Mainland China
Mamun Md Abdullah Al	Hong Kong Baptist University	Hong Kong
Pokharel Aditi	Asian Institute of Technology	Thailand
Chan Mra Thandar	Asian Institute of Technology	Thailand
Wang Feng-Ing	China University of Science and Technology	Taiwan
Wang Hao	Hebei JIDA Lawfirm	Mainland China
Wong Wing Ka Katia	SOAS, University of London	Hong Kong
Wu Huazhen	Tsinghua University	Mainland China
Xin Yajing	China Association for NGO Cooperation	Mainland China
Zhang Huibin	Tsinghua University	Mainland China
Zhang Kaixiang	Nanjing University	Mainland China
Zhang Yifan	Renmin University of China	Mainland China

APPENDIX III INNOVATIVE SOLUTIONS FOR RURAL REVITALISATION

Hong Kong

1. Discover Rural Living Culture - Exploration of Rural Sustainable Development in Hong Kong
2. Local Fair Trade Initiatives in Hong Kong (Solidarity MIHK - Made In HK)
3. Mentorship X Co-housing Reality Show in Shui Hau Village
4. Shell-we-connect: Advancing Oyster Networks, Industry, and Open Water Resources in Lau Fau Shan
5. Sustainable Solidarity Impact Platform (SSIP)
6. Tai O Renaissance Project

Taiwan

1. Activating Local Community: Diversified Promotions of Eel Products, Local Education and Human Services in Punan Village, Yunlin
2. Co-Sea Art Festival in Turtle Island and Toucheng, Yilan - The Birth of the Turtle God
3. Community Food Delivery on Time in Hualien
4. Island Hopping Briefing Education in Penghu
5. LIVE, LIFE, LOVE: Let People Think More about Death in Shiding District, New Taipei City
6. Making Zhuqi Township Better through Public Discussions
7. Mkmatury Sustainability Plan in Yixing Village, Hsinchu
8. Seaside Village Revitalization Information Service Center: A Case Design for the Travel Route in Turtle Island Village Community

Mainland China

1. Carbon Sink Operation and Mechanized Retrofitting of Rural Bamboo Forests - Practice and Exploration of Jingxi Village in Anji County
2. Future Village Innovation Lab in Hangzhou and Other Mainland China Villages
3. Nanjian Tiaocha (南澗跳茶) in Dali, Yunnan
4. Panda.Ba: A Community-based Nature Education Project of Guanba Village in the National Park
5. Rural Business School in Yucun Village, Zhejiang
6. The Dalong Valley Project in Anji County, Zhejiang

Thailand

1. Empowering Communities for Sustainable Water Solutions (ECSW) in Huai Bong, Saraburi
2. Saving Roots & Routes: The Hua Ta Khe Community Regeneration Project
3. Strengthening Community-Based Disaster Risk Reduction through Sustainable Tourism in Bang Muang, Phang-nga
4. Strengthening Resettled People's Livelihood through Sustainable Community Farming in Pathumthani Province, Thailand
5. "Surya Sengtong (สุริยาแสงทอง)" - Energizing Sustainable Farming in Tha Maka, Kanchanaburi
6. "You Give, We Grow" - Innovative Agro-Matchmaking Program in Baan Charoensuk, Buriram
7. Youth Empowerment through Green Agriculture (YEGA) for Rural Revitalization in the Thai Berg Community

APPENDIX IV BEST PRACTICE CASES

Hong Kong

1. Case Study on the Fishpond Management Programme in Northwest New Territories, Hong Kong
2. Community-based Narratives and Public Experiential Engagement for Cultural and Historical Heritage Conservation and Revitalisation of Yim Tin Tsai, Sai Kung
3. Forest Village: Mui Tsz Lam and Kop Tong Sustainable Village Programme
4. Habitat and Biodiversity Conservation Scheme in Sha Lo Tung
5. Kam Tin Mural Village
6. Restoration Works of Yim Tin Tsai St. Joseph's Chapel
7. Sustainable Lai Chi Wo Programme
8. Tai O Community Campaign on Disaster Resilience
9. Tai O Heritage Hotel Project
10. The Pokfulam Farm – Revitalisation of Old Dairy Farm Senior Staff Quarters
11. Yi O Rehabilitation Programme

Mainland China

1. A Common Future: Regeneration and Governance in Qinshan Village
2. Co-Construction between Schools and Regions, Value Sharing - Exploration of the Rural Revitalization Workstation Model at Tsinghua University
3. Collaborative Development Project of Guanba
4. Collaborative Protection and Development Project of Guanba Village, Pingwu County in Sichuan Province, China
5. Community-based Laojun Mountain Biodiversity Conservation
6. Guizhou "Ten Households in One" Rural Micro Governance
7. Hejun College Town's Renaissance
8. Miaojia Village Model: Pioneering Rural Renaissance through Building Novel Community
9. "One Township, One Product" Local Characteristics Cultural and Creative Liquor
10. "Prosperous Rural Community" in Chongqing's Youyang County, Hejiayan Village
11. Shenjing Ancient Village Micro Reconstruction Project
12. Sustainable Ya Mountain Programme
13. Sustainable Yugouliang Yoga Programme
14. The Apple of the Eye
15. The Azalea Project
16. The Community Development and Ecological Conservation in Liguang Village
17. The Construction of Rural Revitalization Demonstration Village in Shanghai: Evidence from the Three Towns in Western Qingpu District
18. "The Practice of Huashu" in the Construction of Beautiful Village
19. The Shang San Dao He Village Beautiful Rural Construction Project

Taiwan

1. Good Rural Food
2. Mkmatur Sustainability Plan
3. Presentation Skills for Rural Kids Project
4. Promoting Regeneration of Rural Villages
5. Promotion of Rural Regeneration: Rural Up
6. Self-sufficient Supply and Empowerment in Agricultural Inputs in Daxi
7. Shierliao Time Village
8. The Formation of a Travel Route in Turtle Island Village Community
9. Tranan Forest Wisdom Seed Cultivation Project Case Study
10. "Walking in Hualien" Project

Thailand

1. Blossoming Horizons: The Wang Nam Khiao Agrotourism Community Enterprise Story
2. Socio-economic and Cultural Revitalization of Thai Berg Community of Khok Salung
3. Sustainable Baan Khao Lak Rafting Community Based Tourism Program
4. The Post-Disaster Community-Based Development Programme of Baan Nam Khem Village, Thailand
5. The Promotion of the Processing of Herbal Products Using Solar Sell Drying Facilities Project

Cambodia and Vietnam

1. Safe Vegetables Production in Cambodia and Vietnam Project

Indonesia

1. The Empowerment of Karanganom Village Residence through "Margo Mulyo" Program in Indonesia

Myanmar

1. Improved Co-Management of Ayeyarwady Wetland Resources (ICAWR) in Myanmar
2. Keep Mrauk U Clean Campaign: A Story of Community Revitalization in Myanmar

Nepal

1. A Case Study of Economic Empowerment of Forest-Dependent Women in Nepal
2. Initiative for Climate Change Adaptation (ICCA) Programme in Nepal
3. Socio-economic and Cultural Revitalization with Homestay Program at Amaltari Village in Nepal

Philippines

1. Trekking to Unlock Community Ailments and Difficulties (TUCAD) in the Philippines

ACKNOWLEDGEMENT

Collaboration for Regional Impact of Global Importance

The three-year journey of AIRI demonstrated the importance and effectiveness of cross-jurisdictional collaboration among universities for urban-rural sustainability in terms of knowledge exchange and co-creation, collaborative network extension, and change agent incubation. We are delighted that this collaborative approach has fostered a sense of empowerment among our sustainability Change Fellows.

It is especially heartening for the programme team to witness that some of the Fellows are now capable of initiating and leading collaborative rural revitalisation action projects for their respective home regions. These Fellows have mobilised networks and engaged diverse sectors to achieve impactful results at local communities. AIRI has catalysed a ripple effect of positive change that is spreading across the Asia-Pacific region.

We sincerely thank our university partners for their unwavering collaboration, hard work and invaluable contributions over the past three years. Our deep appreciation goes to The Hongkong Bank Foundation for their generous support of our AIRI programme. We also extend our gratitude to all our international and local partners, our esteemed speakers and competition panellists, as well as our passionate Fellows and Associate Fellows for contributing to the successful realisation of AIRI.

ASSEMBLING NETWORKS FOR RURAL SUSTAINABILITY IN ASIA-PACIFIC REGION

Compiled by:

Centre for Civil Society and Governance, The University of Hong Kong

Editors:

Lam Wai-Fung, Winnie Law, Katie Chick

Authors:

Winnie Law, Sianna Yiu

Contributors:

Yujia Huo, Annette Nguyen, Yadanar Kyaw

Proofreaders:

Mok Pak Yu, Chloe Lau

Publisher:

Centre for Civil Society and Governance, The University of Hong Kong

Address:

Room 703, 7/F, The Jockey Club Tower, Centennial Campus, The University of Hong Kong

Phone:

3917-4767

Fax:

2857-2521

Email:

ccsg@hku.hk

Website:

<https://ccsg.hku.hk>

Designer:

SketcherSid

Publication date:

April 2025 first edition

ISBN (E-copies):

978-988-76865-9-0

The publication of this book is supported by
The Hongkong Bank Foundation

Not for sale
All rights reserved

