

培育及資助計劃

Incubation & Funding Scheme

發揮公民社會力量齊來建構永續香港

Together, we build a sustainable Hong Kong



滙創永續計劃
Social Innovations for
Sustainable Communities

探索永續生活系列

Sustainable Living Series

培訓講堂

Learning Programme

永續思維工作坊

Sustainability

Thinking Workshop

創意提案

Pitching

種子基金

Seed Fund

第二期
Cohort
2!



Organised by



SOCIAL ENTREPRENEURSHIP AND CIVIC ACTION LAB

CENTRE FOR CIVIL SOCIETY AND GOVERNANCE

Supported by



計劃介紹 About the Programme

由香港大學公民社會與治理研究中心滙創坊開展的「滙創永續」計劃，旨在擴闊香港社會企業的生態發展，集思廣益，**收集由年輕專業人士和輕老族組成的跨代「永續先鋒」的想法和行動**，為香港社會應付永續挑戰作好準備。本計劃聯繫社會各界，研究如何將現有資源重新分配及運用，從而創造新的可能性和擁抱多元價值。

這個計劃亦會提供有系統的支援予「**永續先鋒**」，包括度身訂造的社會創業知識及工具、種子基金及專業培訓等，培育他們為香港永續生活出一分力。本計劃由香港上海滙豐銀行有限公司支持。

Initiated by the Social Entrepreneurship and Civic Action Lab of the Centre for Civil Society and Governance at The University of Hong Kong, the “Social Innovations for Sustainable Communities” Programme aims to **enrich and expand the frontier of the ecosystem for social entrepreneurship in Hong Kong** with a view to preparing the community for meeting long-term local sustainability challenges, and crowdsourcing ideas and actions through incubating a corps of intergenerational **“sustainability catalysers”** consisting of young professionals and young old. The Programme connects different sectors for collective action to encourage re-thinking of how existing processes of resource allocation and utilization can be reconfigured to create new possibilities and blended values.

A corps of **“sustainability catalysers”** will be nurtured through a slew of a tailor-made and diverse incubation activities, including social entrepreneurial knowledge and toolkit, seed grants and professional support, in their journey towards realising their sustainable innovations. The Programme is supported by Hongkong and Shanghai Banking Corporation Limited.



培育元素 Incubation Elements

01 探索永續生活系列 Discovering Sustainable Living Series

透過互動學習，我們將帶領參加者「落區」體驗不同的社會創新項目和感受社區工作（例如：社會共融、社區發展、地區經濟），了解一眾社區有心人如何以人為本，由下而上解決永續社會的挑戰和開拓社區想象。

Interactive excursions will be organised for you to learn about different social innovation projects and community works (e.g. social inclusion, community development, local economy). Get ready to know more about how the community advocates adopt human-centric and bottom-up approach to resolve sustainability challenges in Hong Kong and widen our imagination of "community".

03 永續思維工作坊之 「永續點子大亂鬥」

Sustainability Thinking Workshop "Idea Jamming"

我們將邀請眾多跨界別的永續夥伴到來跟參加隊伍進行永續點子大亂鬥，交流意見，發掘合作機會，及建立永續網絡。優秀的永續點子更有機會得到種子基金及其他資源，實踐你的永續計劃。

Cross-disciplinary peers and expert advisors will be gathered to share their experiences and ideas to further furnish your proposals. Showcase your sustainable ideas and get a chance to win a seed grant for putting your ideas into actions.

02 培訓講堂 Learning Programme for Master Minds

為準備你成為永續先鋒，你可在培訓講堂學習永續生活及社會創新的知識；透過定期的「交流永續點子分享會」和「社創主題大師班」，經歷共創，提升技能，讓您更了解永續議題。

To facilitate you to transform into sustainability catalysers, please join our Learning Programme for Master Minds to learn about sustainability and social innovation. Regular Idea Crossing Sessions and Thematic Master Classes will provide co-creation experience and further equip you with solid knowledge of different sustainability issues.

實踐永續價值 Realise Your Sustainability Ideas 04

我們將根據你的提案，提供個人化的主題培訓及技能提升，一同實踐你的永續點子，為香港的公民社會及永續生活出一分力。

A customised capacity building and skill empowerment programme will be provided to support you to implement your projects. Together, let's contribute to our civil society and create a sustainable future for Hong Kong.



報名資格 Eligibility

參加者必須符合以下所有要求：

Participants are required to fulfil the below criteria:

1. 必須為香港18歲或以上的永久居民；及
Should be a permanent Hong Kong resident aged 18 or above; and
2. 提交一個簡單的永續點子(包括在報名表內)；及
Submit an Idea Brief (in the application form); and
3. 參加過香港大學公民社會與治理研究中心的活動；或永續社區學人計劃成員
Have participated in any activities organised by the Centre for Civil Society and Governance at The University of Hong Kong; or is a member of the Sustainable Communities Fellowship Scheme

資助計劃類別 Categories of Funding Scheme

初創組別 Start-Up Category

初創隊伍將有機會得到\$100,000港元的種子基金。我們建議未有創業經驗或提案發展少於一年的隊伍參與。

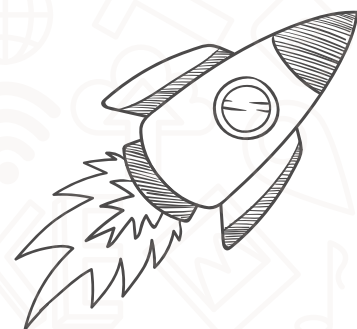
The start-up teams will be offered up to HK\$100,000 to implement your sustainable idea(s). Applicants who do not have social entrepreneurial experience OR have implemented your existing idea(s) for less than one year are eligible to apply.



擴展規模組別 Scale-Up Category

擴展規模隊伍將有機會得到\$200,000港元的種子基金。我們建議有創業經驗或提案發展多於一年的參加者參與此組別。

The scale-up teams will be offered up to HK\$200,000 to scale up your existing sustainable idea(s). Applicants who have had social entrepreneurial experience OR have implemented your existing idea(s) for more than one year are eligible to apply.





活動時間表 Programme Schedule

培育階段 Incubation Stage	月份 / 時期 Month / Period	內容 Content
探索永續生活系列 Discovering Sustainable Living Series	三月 March	公開報名 Open for Application 提交簡單永續點子 Submission of Idea Brief
	四月至六月 April - June	圍繞與永續發展相關議題的互動體驗 (詳情請留意相關宣傳品) Interactive Excursions on Different Sustainability-related Issues (please refer to related publicity materials for details)
培訓講堂 Learning Programme for Master Minds	四月至八月 April - August	交流永續點子分享會 Idea Crossing Sessions 社創主題大師班 Thematic Master Classes
	六月下旬 Late June	截止提交簡單永續點子 Deadline of Submitting Idea Brief
	七月上旬 Early July	永續提案申請 Application of Funding Scheme
	七月十七日(星期六) 17th July (Saturday)	互動學習(1)：撥款單位在亂世下看社會創新 Interactive seminar (1): When Funders Meet Social Innovation in the Midst of Challenging Times
	七月二十四日(星期六) 24th July (Saturday)	互動學習(2)：社會創新的商業模式及社會創業 Interactive seminar (2): Business Model of Social Innovation and Social Entrepreneurship
	七月三十一日(星期六) 31st July (Saturday)	互動學習(3)：設計思維齊行動 Interactive seminar (3): Design Thinking in Action
	八月七日(星期六) 7th August (Saturday)	互動學習(4)：社會創新中的多元價值 Interactive seminar (4): Blended Values for Social Ventures
八月下旬 Late August	截止提交永續提案 Deadline of Submitting Application of Funding Scheme	
永續思維工作坊之 「永續點子大亂鬥」 Sustainability Thinking Workshop - "Idea Jamming"	九月中下旬 Mid-late September	第一日－永續點子大亂鬥 Day 1 – "Show Time X Expert" Jamming
		永續提案諮詢 Tailored Consultation Sessions / Meetings with Expert Advisors
		第二日－永續提案贏取種子基金 Day 2 – Pitch to Win
實踐永續項目 Realise Your Sustainability Ideas	十月 October	實踐你的永續提案 Implementation of Your Sustainability Projects

(註一) 活動時間表或因應疫情發展而作出調節。

(Note 1) The programme schedule may be suitably adjusted in accordance with the development of the epidemic situation.

(註二) 參加者必須出席最少兩次互動學習環節，方可參與永續思維工作坊之「永續點子大亂鬥」，競逐種子基金。

(Note 2) Each team is required to participate in at least two Interactive Seminar sessions to become eligible to proceed to the Sustainability Thinking Workshop – "Idea Jamming".

(註三) 相關講者、專家顧問與評審名單，請留意計劃網站的最新公佈。

(Note 3) Please refer to the Programme Website for the list of guest speakers, expert advisors and adjudicators.

互動學習(1)：撥款單位在亂世下看社會創新 **Interactive Seminar (1): When Funders Meet Social Innovation in the Midst of Challenging Times**

- 日期 Date:** 二零二一年七月十七日(星期六)
17th July, 2021 (Saturday)
- 時間 Time:** 下午三時至五時半
3pm - 5:30pm
- 地點 Venue:** 香港大學 (地點待定)
The University of Hong Kong (to be confirmed)
- 形式 Format:** 講堂以網上直播形式進行，亦有少量現場名額，先到先得
Live streaming with limited face-to-face quotas, on a first-come-first-served basis
- 嘉賓講者
Guest Speakers:**
- 利希慎基金總裁 何宗慈女士
Ms Cecilia Ho, President, Lee Hysan Foundation
- 李錦記家族基金家族基金主管 劉明燕女士
Ms May Lau, Head of Family Foundation, Lee Kum Kee Family Foundation
- 擇善基金會行政總監 蘇梅玲女士
Ms Irene Mui Ling So, Executive Director, ZeShan Foundation
- WYNG 43 Social Investment 董事 葉蓁蓁女士
Ms Ada Yip, Director, WYNG 43 Social Investment
- 主持人
Moderator:** 香港大學公民社會與治理研究中心總監 林維峯教授
Professor Wai-fung Lam, Director, Centre for Civil Society and Governance, HKU

內容 Content

- 簡介影響力投資及家族基金對社會創新項目的揀選標準及期望
To introduce impact investors and family foundations' selection criteria and expectations of social innovation projects
- 影響力投資者、家族基金及其他類型的財務支持對支持社會創新項目的看法
To understand the differences between philanthropy, impact investment, and other forms of financial supports towards social innovation projects



互動學習(2)：社會創新的商業模式及社會創業 **Interactive Seminar (2): Business Model of Social Innovation and Social Entrepreneurship**

- 日期 Date:** 二零二一年七月二十四日 (星期六)
24th July, 2021 (Saturday)
- 時間 Time:** 下午二時至五時
2pm - 5pm
- 地點 Venue:** 香港大學 (地點待定)
The University of Hong Kong (to be confirmed)
- 形式 Format:** 講堂以網上直播形式進行，亦有少量現場名額，先到先得
Live streaming with limited face-to-face quotas, on a first-come-first-served basis
- 嘉賓講者 Guest Speakers:** Green Price 聯合創辦人 韓駿謙先生
Mr Terence Hon, Co-founder, Green Price
- 兩生花 東華三院區域主任 劉劍雲女士
Ms Kim Lau, District Coordinator, Rinato Eco Floral Shop of TWGHs
- 一念素食創辦人 凌浩雲先生
Mr Howard Ling Ho-Wan MH, Founder, Bijas
- 主持人 Moderator:** 香港大學經管學院 林誠光教授
Professor Simon S.K. Lam, Professor, HKU Business School

內容 Content

- 學習不同的商業模式，揀選適合自己計劃的模式
To learn about business modelling and select a suitable model for your project
- 介紹社會創業的機遇及挑戰
To introduce the opportunities and challenges in social entrepreneurship

互動學習(3)：設計思維齊行動 **Interactive Seminar (3): Design Thinking in Action**

- 日期 Date:** 二零二一年七月三十一日 (星期六)
31st July, 2021 (Saturday)
- 時間 Time:** 下午二時至六時
2pm - 6pm
- 地點 Venue:** 香港大學 (地點待定)
The University of Hong Kong (to be confirmed)
- 形式 Format:** 實體活動
Face-to-face session
- 嘉賓講者**
Guest Speakers: 一口設計工作室聯合創辦人 梅詩華女士
Ms Sarah Mui, Co-founder & Design Director, One Bite Design Studio

內容 Content

- 介紹設計思維在社會創新項目的應用
To learn about the application of design thinking process
- 親身體驗落區體驗設計思維的應用
To have hands-on experiences on design thinking process

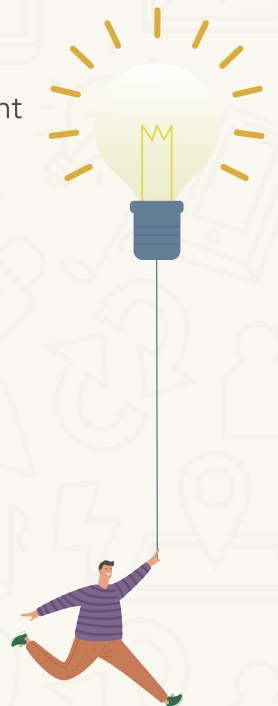


互動學習(4)：社會創新中的多元價值 Interactive Seminar (4): Blended Values for Social Ventures

日期 Date:	二零二一年八月七日 (星期六) 7th August, 2021 (Saturday)
時間 Time:	下午二時至五時 2pm - 5pm
地點 Venue:	芝鵠 Art and Cultural Outreach
形式 Format:	講堂以網上直播形式進行，亦有少量現場名額，先到先得 Live streaming with limited face-to-face quotas, on a first-come-first-served basis
嘉賓講者 Guest Speakers:	芝鵠主席 馮美華女士 Ms May Fung, Chair, Art and Cultural Outreach 傳耆共同創辦人及執行總監 梁藹婷女士 Ms Joyce Leung, Co-founder & Executive Director, Eldage 香港社會創投基金創新及企業培育高級主任 梁爾琪女士 Ms Yiki Leung, Senior Associate, Innovation and Incubation, Social Ventures Hong Kong
主持人 Moderator:	社會效益分析智庫行政總裁及創辦人 及 劍橋大學Judge商學院社會創新中心副研究員 王筱璐博士 Dr Norah Wang, CEO & Founder, Impact Analytics; and Associate, Cambridge Centre for Social Innovation

內容 Content

- 社會企業及社區發展項目代表分享他們的經驗
To showcase the exemplary models of social ventures and community development projects in Hong Kong
- 混合價值在鞏固他們企業的重要性
To showcase the importance of blended values for social ventures



嘉賓講者簡介 Introduction of Guest Speakers



Ms May Fung

Chair, Art and Cultural Outreach

Ms May is a video artist and a chair of Art & Culture Outreach. She is involved in HKICC Lee Shau Kee School of Creativity as a Consultant (Art Learning). May also serves at different organisations, including Home Affairs Bureau, and Leisure & Cultural Services Department as an Advisor, Hong Kong Arts Development Council as Advisor/Assessor. She is engaged as a part-time lecturer at Fine Arts Department of The Chinese University of Hong Kong.



Mr Howard Ling Ho-Wan MH

Founder, Bijas

Howard Ling is the Chief Consultant of Social Enterprise Business Centre. Howard began his social entrepreneurial journey in 2004. He founded and consulted over 30 social enterprises such as Bijas, Happy Veggies, Direction Association for the Handicapped Social Enterprise, Chinese Opera for Children, Act Plus Animation Academy, Angelchild, Cook1Cook, Chappie Technology, and Dr. Mask. He also serves as a consultant or advisor to many foundations, and education institutions in Hong Kong and Macau. He was awarded the Medal of Honour (MH) by the Hong Kong Special Administrative Region (HKSAR), and the Hong Kong Humanity Award in 2017 for his dedicated public and community services, particularly his contributions to the development of social enterprises.

嘉賓講者簡介 Introduction of Guest Speakers



Ms Joyce Leung

Co-founder & Executive Director, Eldage

As an enthusiast of Corporate Social Responsibility and Creating Shared Value, Joyce is committed to connecting Fimmick's businesses with financial returns and social impacts through engaging local and regional stakeholders in co-creating purposeful values for Fimmick and the society.

Supported by Fimmick's core competence in digital, Joyce set up a social enterprise named Eldage in 2016. Eldage has been receiving positive feedback and awards for its commercial values and its efforts in promoting traditional craftsmanship. She is concurrently leading the development of Fimmick Academy in offering customised corporate training and low-cost individual online learning courses for enhancing digital literacy and nurturing future-ready talents.

Joyce frequently shares her unique personal journey in social entrepreneurship/innovation, digital marketing for the social sector and CSR/CSV gained through her dual roles in Fimmick and Eldage on different occasions with businesses, NGOs and SEs, universities and in capacity building training sessions. She actively encourages everyone to leverage their own capacity and organisation's own expertise, thereby exploring business opportunities through addressing societal issues.



Mr Terence Hon

Co-founder, Green Price

Terence is a social entrepreneur who started venture in his early university life. With his enthusiasm in low-carbon development and business strategy, GreenPrice has expanded 5 physical stores and saved more than 1 million short-dated food annually. Apart from his entrepreneurial experience, he is skilled in process improvement, multichannel retailing and talent development.

嘉賓講者簡介 Introduction of Guest Speakers



Ms Cecilia Ho
President, Lee Hysan Foundation

Cecilia Ho is the President of Lee Hysan Foundation. Cecilia is also a member of the Advisory Committee on Arts Development under the Home Affairs Bureau, the Social Innovation and Entrepreneurship Development Fund Task Force, the Steering Committee for "FOOD-CO" Intermediary Services for Building Capacity in Food Support Service, the Advisory Committee of the Department of Social Work and Social Administration of the University of Hong Kong as well as the Advisory Committee of the School of Drama of the Hong Kong Academy for Performing Arts.

Cecilia is the former Executive Director of Goldman Sachs (Asia) L.L.C. and former Managing Director and Team Head of Citi Private Bank prior to joining Lee Hysan Foundation. She has over 30 years of banking experience in various senior management positions including: Asian Business Development Head at Citi Canada; Business Manager for International Personal Banking at Citigroup, managing Asia, North America, Europe, Middle East and Africa region; Head of Sales & Services at Standard Chartered Bank covering eight countries.

She earned her BBA with honors from the University of Hawaii at Manoa, and was presented the HALL OF HONOR AWARD in 2010 by the University of Hawaii College of Business. She attended the Stanford Executive programme at the Stanford Graduate School of Business. In 2019, she received the Honorary University Fellowship by the University of Hong Kong.



Ms May Lau
*Head of Family Foundation,
Lee Kum Kee Family Foundation*

Trained as a social worker in Hong Kong, May has started her entrepreneurship journey as a marketer. She dived into her cooking hobby in running a private kitchen for five years before eventually joining Lee Kum Kee and took the role as a culinary artist.

May started to work for Lee's family philanthropy since 2015. She completed the Master of Social Sciences (Nonprofit Management) at the University of Hong Kong and achieved distinction qualification. As Head of Lee Kum Kee Family Foundation, she utilizes her extensive experience and skills in strategy planning, marketing, and communications to collaborate with partners in promoting happy family relationships among multigenerational families in Hong Kong.

She is also currently a student in the course of Doctor of Public Administration at the University of Hong Kong.

嘉賓講者簡介 Introduction of Guest Speakers



Ms Sarah Mui

Co-Founder & Design Director, One Bite Design Studio

Sarah is a catalytic architect. She brings collaborative creations that are grounded in human-design thinking, to connect people to the space in their community and strengthen the social fabric. She focuses on public space, social design and cross-disciplinary creative strategy. Leading the first B Corp in Hong Kong from the architectural industry, she and her team at onebite bridges commercial & public sector with the community through their creative ideas. From the Kai Yip Play Space in Kowloon Bay, to the latest intergenerational play space in Tuen Mun Siu Hei Couty, onebite has been leading in innovative public space design in the city. A new one opening next week at Ming Tak Estate in Tseung Kwan O will be the first women-priority sportsground. On the other hand, during the COVID, the team has rolled out two initiatives with other community groups to promote good food with dignity which has served over 2000 meals and to produce eco-mask holders with social benefits, sold over 5000 pcs.



Ms Kim Lau

District Coordinator, Rinato Eco Floral Shop of TWGHs

Ms Kim Lau is District Coordinator (Sham Shui Po / Wong Tai Sin) of Tung Wah Group of Hospitals and responsible for corporate volunteer work. She has initiated four Social Enterprises, including: "Tai Kok Tsui Mrs. Mc" awarded for Outstanding Social Enterprise Award 2011; Food-for-all Kitchen which gives an alternative of hot meals and develop fresh food coupons for the under-privileges; 2012 setting up Creative Cube. 2016 setting up Rinato Eco Floral Shop to connect the hearing impaired persons with the society for social inclusion and environmental protection. In 2019, Rinato was selected as "The 10th Hong Kong Outstanding Corporate Citizenship Award - Silver Award".

嘉賓講者簡介 Introduction of Guest Speakers



Ms Yiki Leung

*Senior Associate, Innovation and Incubation,
Social Ventures Hong Kong*

Yiki joined SVhk in 2018 as an Associate in the Innovation and Incubation team.

Translating the soft skills from her advertising and public relations experience, she engages in several community empowerment projects from idea curation to execution. These include HATCH, Cradle to Classroom, and Playtao Joyland. She also supports CSV projects and co-creates social impact with Cathay Pacific.

Yiki believes everyone can make an impact. "Be all you can be" - Yiki aspires to take part and do her best for the community. She loves the many possibilities and opportunities in life and hopes to grow every day - if not taller and bigger - then kinder and wiser.



Ms Ada Yip

Director, WYNG 43 Social Investment

Ada is a director of WYNG 43 Social Investment which invests financial and human capital in innovative mission-focused start-ups. Ada is also the Chief Executive Officer of Urban Spring, a purpose-driven startup with a mission to reduce the consumption of single-use plastic bottles through building a network of well-designed and well-maintained water refill stations. Prior to these ventures, Ada was the Program Director of the i2i (incubation to investment) program at SOW Asia. Ada also sits on the board of Hong Kong Institute of Social Impact Analysts and Education For Good. She volunteers at a number of non-profit organizations and is a part of the Advisory Committee on Enhancing Employment of People with Disabilities under the Social Welfare Department of the Hong Kong Government. Ada was born and brought up in Hong Kong. She has been fully dedicated to supporting the social entrepreneurship development in Hong Kong since 2013. Prior to embarking on this journey, Ada worked at a number of financial institutions in Toronto, Hong Kong and Tokyo.

嘉賓講者簡介 Introduction of Guest Speakers



Ms Irene Mui Ling So

Executive Director, ZeShan Foundation

Ms. So is a mission-driven strategist and leader with over 20 years of track record in launching new initiatives and impactful programmes for NGOs, development agencies and charitable foundations at local, regional and international levels, including Porticus, the Hong Kong Jockey Club Charities Trust, Hong Kong Arts Centre and Oxfam. In 2019, she joined ZeShan Foundation as Executive Director and has led an internal system review and a re-strategising exercise with regards to ageing, environment, housing, health and vulnerable groups.

As a former journalist, Ms So is also trained and experienced in strategic planning, programme management, grant making, knowledge management, executive management, policy advocacy, innovation development, impact measurement, organisational learning, training, public relations and multi-stakeholder engagement. She is a leader well versed in multiple disciplines, with experiences in addressing complex social issues, including migration, human trafficking, refugees, disaster management, youth development, aging population and development education.

主持人簡介 Introduction of Moderators



Professor Simon S.K. Lam
HKU Business School

Professor Simon Lam is currently an Ian Davies Professor in Ethics and Head of Management and Strategy Area at the Faculty of Business and Economics of The University of Hong Kong. He is also the Director of the Centre for Asian Entrepreneurship and Business Values (CASEBV). He has published academic papers and books on the topics of entrepreneurship, corporate strategy and organization development. Professor Lam has extensive experience in entrepreneurship, corporate management, strategic development of organizations and corporate finance.



Professor Wai-Fung Lam
*Director, Centre for Civil Society and Governance,
The University of Hong Kong*

Professor Wai-Fung Lam is the Director of the Centre for Civil Society and Governance, Director of the Doctor of Public Administration Programme, Director of the Master Public Administration Programme and Director of the HKU-HKJC Excellence and Capacity Building for Entrepreneurship and Leadership for the Third Sector (ExCEL3) Project at the University of Hong Kong. He finished his undergraduate study at the Chinese University of Hong Kong, and received a PhD in Public Policy from Indiana University, Bloomington.

Professor Lam is an expert in common-pool resource management, institutional policy analysis, public governance, and civil society. His research has focused on the design of efficient institutional arrangements for the governance and managements for the governance and management of public resources, a core issue in public administration and sustainable development. Professor Lam has served on the editorial committees of Public Administration Review, International Review of Administrative Sciences, Journal of Comparative Policy Analysis, Nonprofit and Voluntary Sector Quarterly, and Asian Politics and Policy, and is co-editor of The Asia-Pacific Journal of Public Administration.

主持人簡介 Introduction of Moderators



Dr Norah Wang

CEO & Founder, Impact Analytics

Associate, Cambridge Centre for Social Innovation

Dr Norah Wang's research focuses on governance and social value creation. In the past ten years, she has aimed to understand third sector development, collaborative governance, social entrepreneurship, and social innovation in non-western contexts. My research on social service contracting was supported by the Public Policy Research Funding Scheme of the Policy Innovation and Co-ordination Office of the Government of Hong Kong Special Administrative Region.

Dr Wang has had interdisciplinary training in organizational studies, behavioral economics, public administration and social work. Her latest academic position was research assistant professor at the Hong Kong Polytechnic University. Prior to that, she did two Post-doctoral Fellow positions with the University of Hong Kong, one with the Department of Politics and Public Administration and the other one is with Department of Social Work and Social Administration.

Outside academia, Dr Wang has led projects that produced assessment tools for corporations in Hong Kong to manage their social responsibilities based on the ISO26000, and for NGOs to enhance strategic leadership and organizational health in terms of governance, operation and renewal. She has also actively engaged in social return on impact (SROI) analysis. She has set up a social enterprise "IMPACT ANALYTICS" to provide training and consulting services on social value creation and impact assessment & management. Recently, she started to apply SROI methods to social sustainability analysis in the built environment, conservation of cultural heritage sites and the like.

目錄 Contents

1. 計劃介紹 About the Programme P.1
 - ◎ 培育元素 Incubation Elements
 - ◎ 報名資格 Eligibility
 - ◎ 資助計劃類別 Categories of Funding Scheme
2. 活動時間表 Programme Schedule P.4
3. 嘉賓講者簡介 Introduction of Guest Speakers P.9
4. 主持人簡介 Introduction of Moderators P.15
5. 關於我們 About Us P.17



關於我們 About Us



公民社會與治理研究中心
CENTRE FOR CIVIL SOCIETY AND GOVERNANCE

香港大學 THE UNIVERSITY OF HONG KONG

公民社會與治理研究中心（本中心）於2002年12月成立，是香港首個致力研究公民社會本質、元素、動態和角色（特別是在治理上的貢獻）的研究中心。我們以建構永續社會為使命，以社群為本的創新方案，推動相關政策的討論和落實。

Established in December 2002, the Centre for Civil Society and Governance ("the Centre") was the first research centre in Hong Kong dedicated to enhancing our knowledge of civil society - its nature, constituents, dynamics, roles (in particular its contribution toward governance) - and to contributing to the attainment of a sustainable society through forging community-based, innovative solutions to inform policy deliberation and collective action.



匯創坊
SOCIAL ENTREPRENEURSHIP AND CIVIC ACTION LAB

公民社會與治理研究中心
CENTRE FOR CIVIL SOCIETY AND GOVERNANCE

匯創坊致力瞭解和推動社群為本的集體行動，以加強及利用人類的創造力，並建立社會資本。通過培養社會創業，孕育社會企業和共享精神，締造互相融和的社會和經濟價值。

It strives to understand and foster community based collective action as a vehicle for building and utilizing human ingenuity and building social capital. In particular, we seek to nurture social entrepreneurship with a focus on blending social and economic values through fostering various social ventures and commoning endeavours.



追蹤我們 Follow Us



項目網頁 Project Website




Facebook



MeWe

計劃查詢 Enquiries

 (852) 3917 8638

 sisc@hku.hk

